

(ANIAK2.ANIAK) 18312

ANIAK TWO DEPARTURE (RNAV)

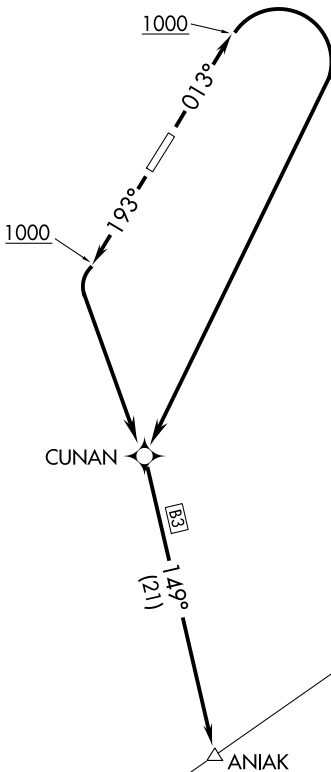
AL-9470 (FAA)

HOLY CROSS (HCA)(PAHC)

HOLY CROSS, ALASKA

**TOP ALTITUDE:
ASSIGNED BY ATC**

ANCHORAGE CENTER
118.15 251.05
ASOS
118.325
CTAF
122.8



AK, 16 MAY 2024 to 11 JUL 2024

AK, 16 MAY 2024 to 11 JUL 2024

V480 T222

V480 T222

TAKEOFF MINIMUMS
Rwy 1, 19: Standard.

NOTE: RNAV 1.
NOTE: GPS required.
NOTE: Chart not to scale.



DEPARTURE ROUTE DESCRIPTION

TAKEOFF RUNWAY 1: Climb heading 013° to 1000, then right turn direct CUNAN, then via depicted route, thence. . . .

TAKEOFF RUNWAY 19: Climb heading 193° to 1000, then direct CUNAN, then via depicted route, thence. . . .

. . . .maintain 3700 or as assigned by ATC.

ANIAK TWO DEPARTURE (RNAV)

(ANIAK2.ANIAK) 21JUL16

HOLY CROSS, ALASKA
HOLY CROSS (HCA)(PAHC)