

APP CRS	Rwy Idg	4000
013°	TDZE	74
	Apt Elev	75

RNAV (GPS) RWY 1

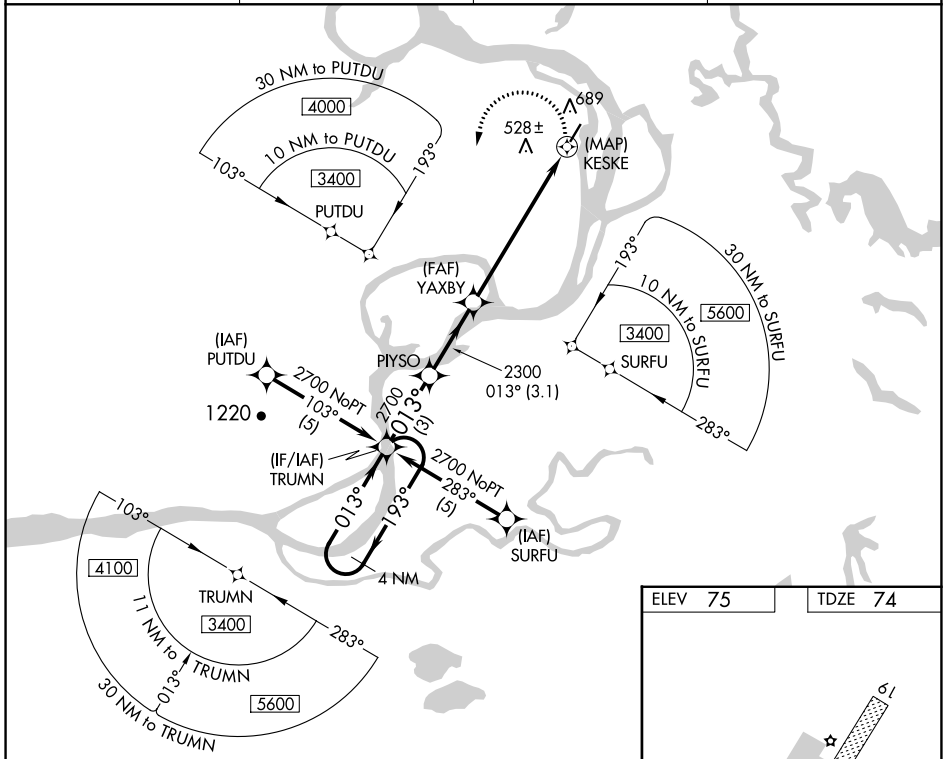
HOLY CROSS (HCA) (PAHC)

RNP APCH.

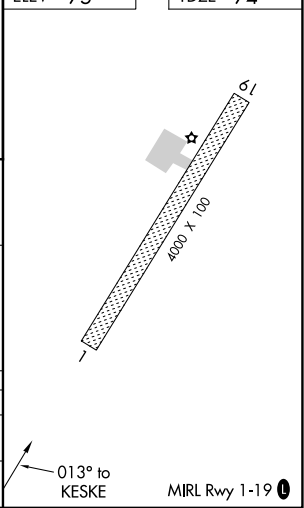
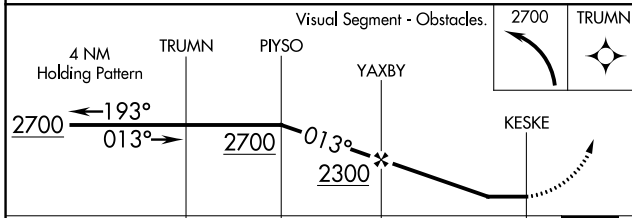
⚠ Circling NA west of Rwy 1-19. When local altimeter setting not received, use Anvik altimeter setting and increase all MDAs 120 feet, and increase visibility LNAV Cat A, B, D ¼ SM, Cat C ½ SM and Circling Cat B, D ¼ SM, Cat C ½ SM. Circling Rwy 19 NA at night. Rwy 1 helicopter visibility reduction below ¾ SM NA.

MISSED APPROACH: Climbing left turn to 2700 direct TRUMN and hold.

AWOS-3P 118.325	ANCHORAGE CENTER 118.15 251.05	KENAI RADIO 122.45	CTAF 122.8
---------------------------	--	------------------------------	----------------------



ELEV 75	TDZE 74
---------	---------



CATEGORY	A	B	C	D
LNAV MDA	940-1 866 (900-1)	940-1¼ 866 (900-1¼)	940-2½ 866 (900-2½)	940-2¾ 866 (900-2¾)
CIRCLING	940-1¼	865 (900-1¼)	940-2½ 865 (900-2½)	940-2¾ 865 (900-2¾)

AK, 16 MAY 2024 to 11 JUL 2024

AK, 16 MAY 2024 to 11 JUL 2024