

RNAV (GPS) RWY 19

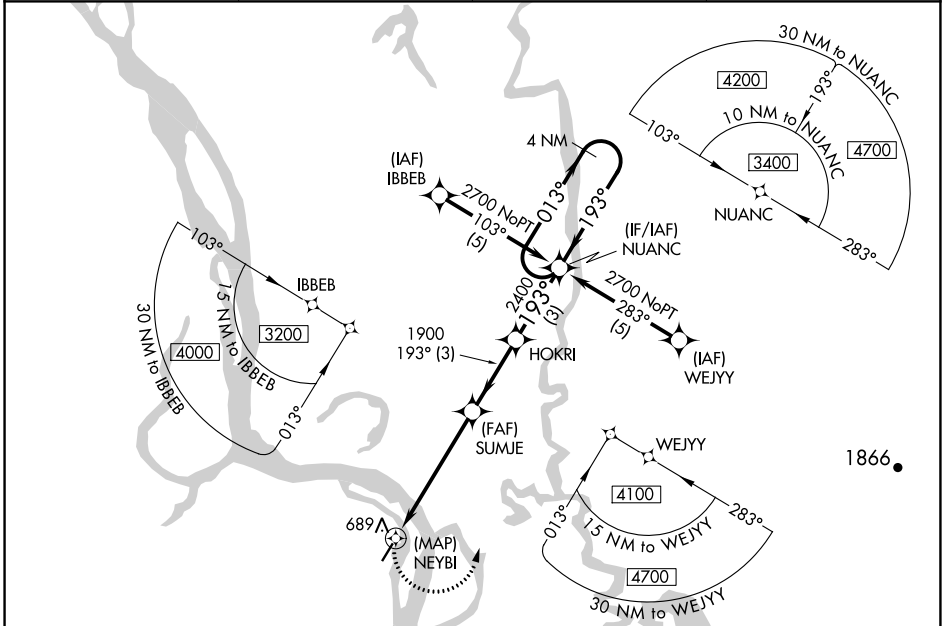
HOLY CROSS (HCA) (PAHC)

APP CRS 193°	Rwy Idg 4000
	TDZE 75
	Apt Elev 75

▼ Rwy 1, 19 helicopter visibility reduction below 1 SM NA. DME/DME RNP-0.3 NA.
▲ Procedure NA at night. Circling NA west of Rwy 1-19. When local altimeter setting not received, use Anvik altimeter setting and increase all MDAs 120 feet, and increase visibility Cat B/C ¼ SM and LNAV Cat D ½ SM.
❄ -29°C

MISSED APPROACH:
 Climbing left turn to 2700 direct NUANC and hold.

AWOS-3P 118.325	ANCHORAGE CENTER 118.15 251.05	KENAI RADIO 122.45	CTAF 122.8
---------------------------	--	------------------------------	----------------------



ELEV 75	TDZE 75
193° to NEYBI	

MIRL Rwy 1-19

2700	NUANC	Visual Segment - Obstacles.	NUANC	4 NM Holding Pattern
CATEGORY	A	B	C	D
LNAV MDA	1020-1¼	945 (1000-1¼)	1020-2¾ 945 (1000-2¾)	1020-3 945 (1000-3)
CIRCLING	1020-1¼	945 (1000-1¼)	1020-2¾ 945 (1000-2¾)	1020-3 945 (1000-3)

AK, 16 MAY 2024 to 11 JUL 2024

AK, 16 MAY 2024 to 11 JUL 2024