

APP CRS	Rwy Idg	<b>4051</b>
<b>297°</b>	TDZE	<b>4146</b>
	Apt Elev	<b>4149</b>

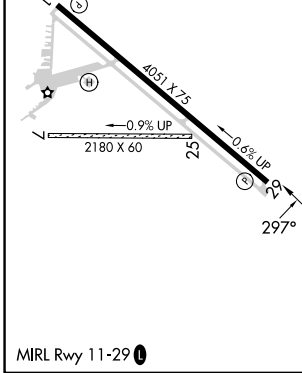
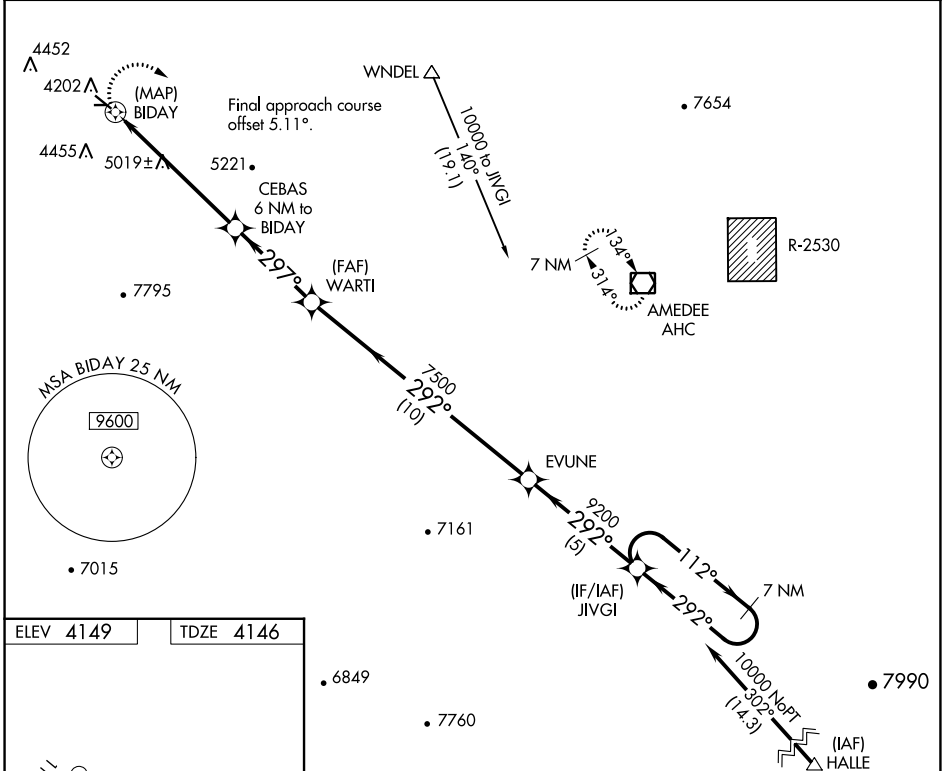
# RNAV (GPS) RWY 29

SUSANVILLE MUNI (SVLE)

**⚠** DME/DME RNP-0.3 NA. When local altimeter setting not received, use Reno/Stead altimeter setting and increase all MDA 720 feet. Circling to Rwy 7/25 NA. Rwy 29 helicopter visibility reduction below 3/4 SM NA. Circling NA for Cat D southwest of Rwy 11-29.

**⚠** MISSED APPROACH: Climbing right turn to 14000 direct AHC VOR/DME and hold, continue climb-in-hold to 14000.

AWOS-3 <b>133.8</b>	OAKLAND CENTER <b>128.8 285.5</b>	UNICOM <b>122.8 (CTAF) 0</b>
------------------------	--------------------------------------	---------------------------------



14000	AHC	Visual Segment - Obstacles.	JIVGI	7 NM
				Holding Pattern
	CEBAS 6 NM to BIDAY	WARTI	EVUNE	112° → 10000
	BIDAY	7500	9200	← 292°
	6200			
	0.2	6 NM	3.8 NM	10 NM
			5 NM	
CATEGORY	A	B	C	D
LNAV MDA	5760-1¼ 1614 (1700-1¼)	5760-1½ 1614 (1700-1½)	5760-3	1614 (1700-3)
CIRCLING	5760-1¼ 1611 (1700-1¼)	5760-1½ 1611 (1700-1½)	5780-3 1631 (1700-3)	6060-3 1911 (2000-3)

SW-2, 13 JUN 2024 to 11 JUL 2024

SW-2, 13 JUN 2024 to 11 JUL 2024