

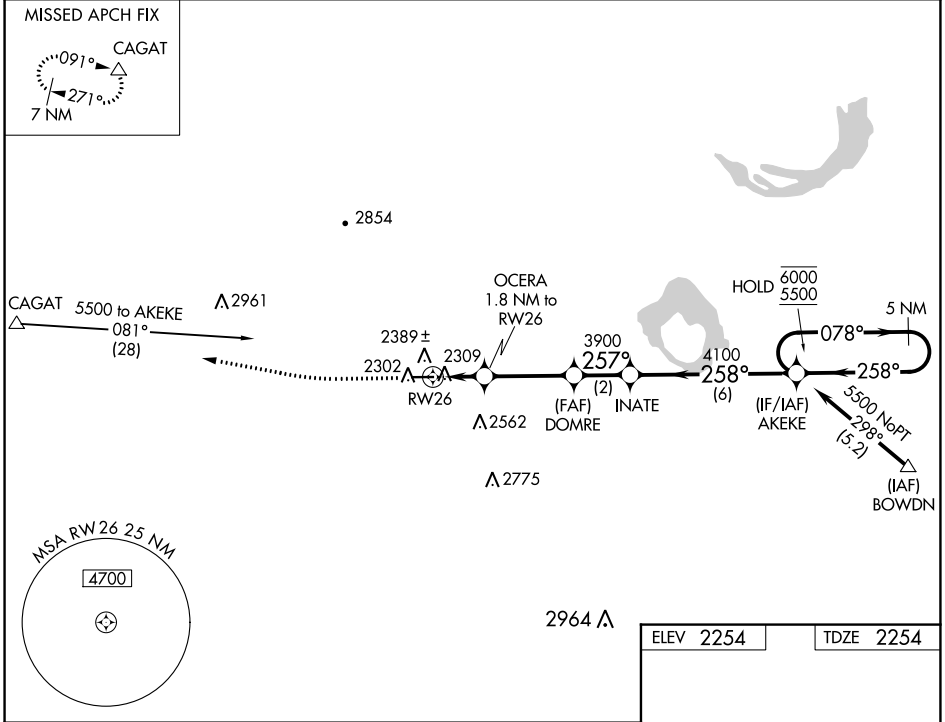
WAAS CH 97721 W26A	APP CRS 257°	Rwy Idg TDZE Apt Elev	4500 2254 2254
--	------------------------	-----------------------------	---

RNAV (GPS) RWY 26

MALTA (M75)

RNP APCH. ▼	MISSED APPROACH: Climb to 2700, then climb to 6500 direct CAGAT and hold, continue climb-in-hold 6500.
----------------	--

AWOS-3 119.25	SALT LAKE CITY CENTER 126.85 305.2	AUNICOM 122.8 (CTAF) ①
-------------------------	--	----------------------------------



NW-1, 13 JUN 2024 to 11 JUL 2024

NW-1, 13 JUN 2024 to 11 JUL 2024

<p>2700 6500 CAGAT</p> <p>VGSI and descent angles not coincident (VGSI Angle 3.00/TCH 27).</p> <p>OCERA 1.8 NM to RWY 26</p> <p>DOMRE</p> <p>INATE</p> <p>AKEKE 5 NM Holding Pattern</p> <p>2880 3900 4100 6000 5500</p> <p>0.9 NM 0.9 NM 3.2 NM 2 NM 6 NM</p>	<p>ELEV 2254 TDZE 2254</p> <p>257° to RWY 26</p> <p>4500 X 75</p>																				
<table border="1"> <thead> <tr> <th>CATEGORY</th> <th>A</th> <th>B</th> <th>C</th> <th>D</th> </tr> </thead> <tbody> <tr> <td>LP MDA</td> <td>2560-1</td> <td>306 (400-1)</td> <td></td> <td>NA</td> </tr> <tr> <td>LNAV MDA</td> <td>2640-1</td> <td>386 (400-1)</td> <td></td> <td>NA</td> </tr> <tr> <td>① CIRCLING</td> <td>2800-1 546 (600-1)</td> <td>2880-1 626 (700-1)</td> <td></td> <td>NA</td> </tr> </tbody> </table>	CATEGORY	A	B	C	D	LP MDA	2560-1	306 (400-1)		NA	LNAV MDA	2640-1	386 (400-1)		NA	① CIRCLING	2800-1 546 (600-1)	2880-1 626 (700-1)		NA	MIRL Rwy 8-26 ①
CATEGORY	A	B	C	D																	
LP MDA	2560-1	306 (400-1)		NA																	
LNAV MDA	2640-1	386 (400-1)		NA																	
① CIRCLING	2800-1 546 (600-1)	2880-1 626 (700-1)		NA																	