

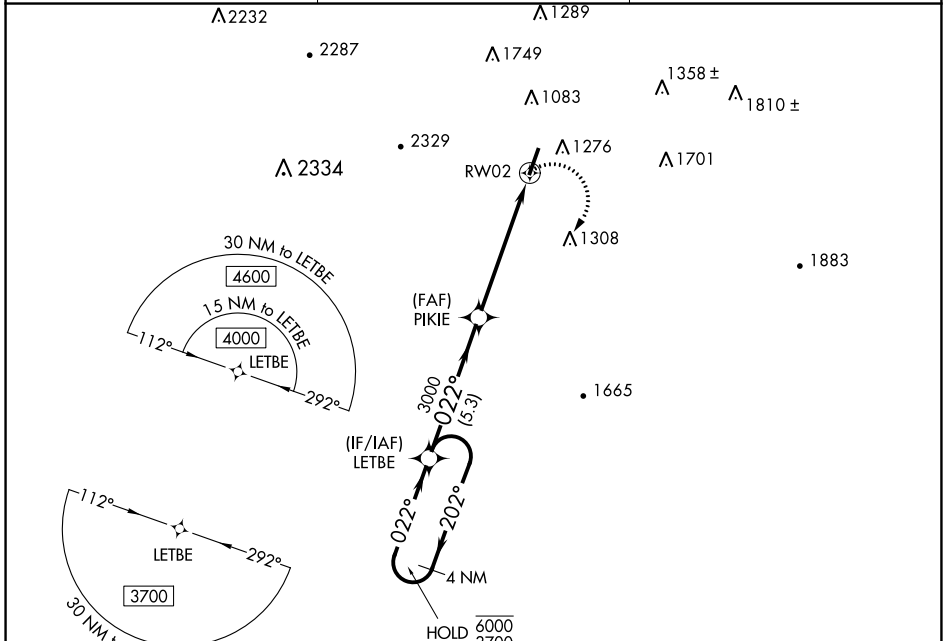
APP CRS	Rwy Idg	5350
022°	TDZE	772
	Apt Elev	776

RNAV (GPS) RWY 2

BARWICK LAFAYETTE (9A5)

RNP APCH - GPS.	MISSED APPROACH: Climbing right turn to 3700 direct LETBE and hold, continue to climb-in-hold to 3700.
<p>▼ Procedure NA at night. Rwy 2 helicopter visibility reduction below 1 SM NA. When local altimeter not received, use Chattanooga altimeter setting and increase all MDAs 80 feet.</p> <p>▲</p>	

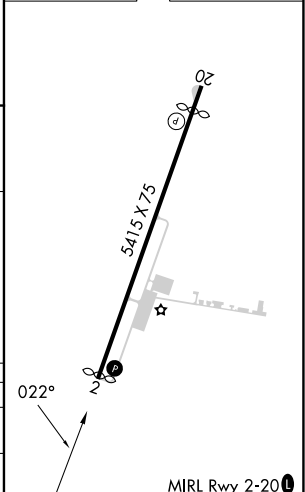
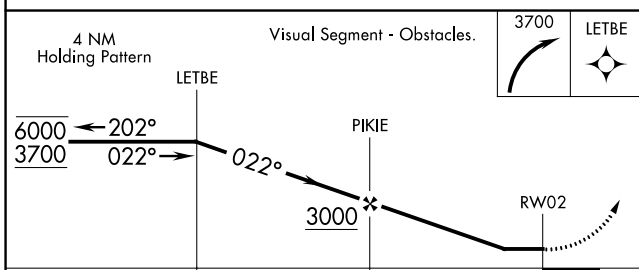
AWOS-3 119.775	CHATTANOOGA APP CON ★ 125.1 379.1	UNICOM 122.8 (CTAF) 0
--------------------------	---------------------------------------------	---------------------------------



SE-4, 13 JUN 2024 to 11 JUL 2024

SE-4, 13 JUN 2024 to 11 JUL 2024

ELEV 776	D TDZE 772
----------	-------------------



CATEGORY	A	B	C	D
LNAV MDA	1480-1708 (800-1)		NA	
C CIRCLING	1660-1884 (900-1¼)		NA	