

APP CRS	Rwy Idg	4156
082°	TDZE	1618
	Apt Elev	1635

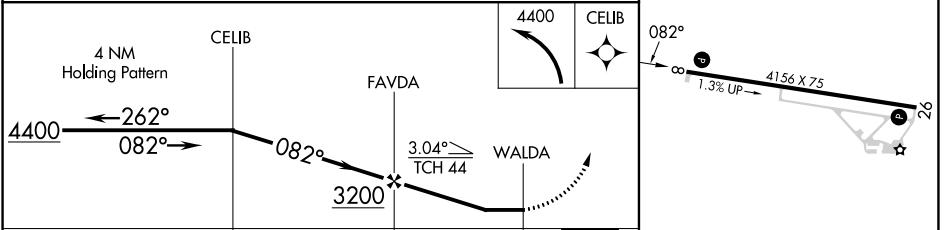
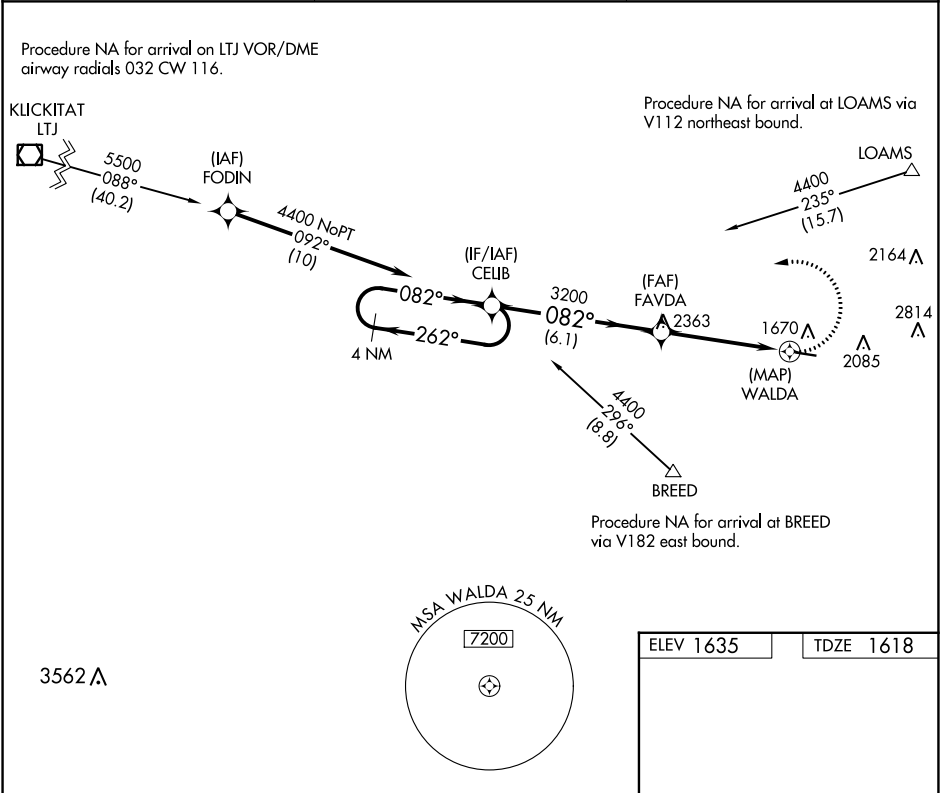
RNAV (GPS) RWY 8

LEXINGTON (9S9)

NA When local altimeter setting not received, use Hermiston altimeter setting and increase all MDAs 220 feet, increase LNAV Cat C visibility ½ SM and Circling Cat A/B visibility ¼ SM. Procedure NA at night.
 DME/DME RNP- 0.3 NA. Helicopter visibility reduction below 1 SM NA.

MISSED APPROACH: Climbing left turn to 4400 direct CELIB and hold.

AWOS-3 134.475	SEATTLE CENTER 132.6 269.35	CTAF 122.9
--------------------------	---------------------------------------	----------------------



	ELEV 1635		TDZE 1618	
CATEGORY	A	B	C	D
LNAV MDA	2120-1	502 (500-1)	2120-1½	502 (500-1½)
CIRCLING	2380-1 745 (800-1)	2460-1¼ 825 (900-1¼)	2700-3 1065 (1100-3)	3180-3 1545 (1600-3)

MIRL Rwy 8-26
REIL Rws 8 and 26

NW-1, 13 JUN 2024 to 11 JUL 2024

NW-1, 13 JUN 2024 to 11 JUL 2024