

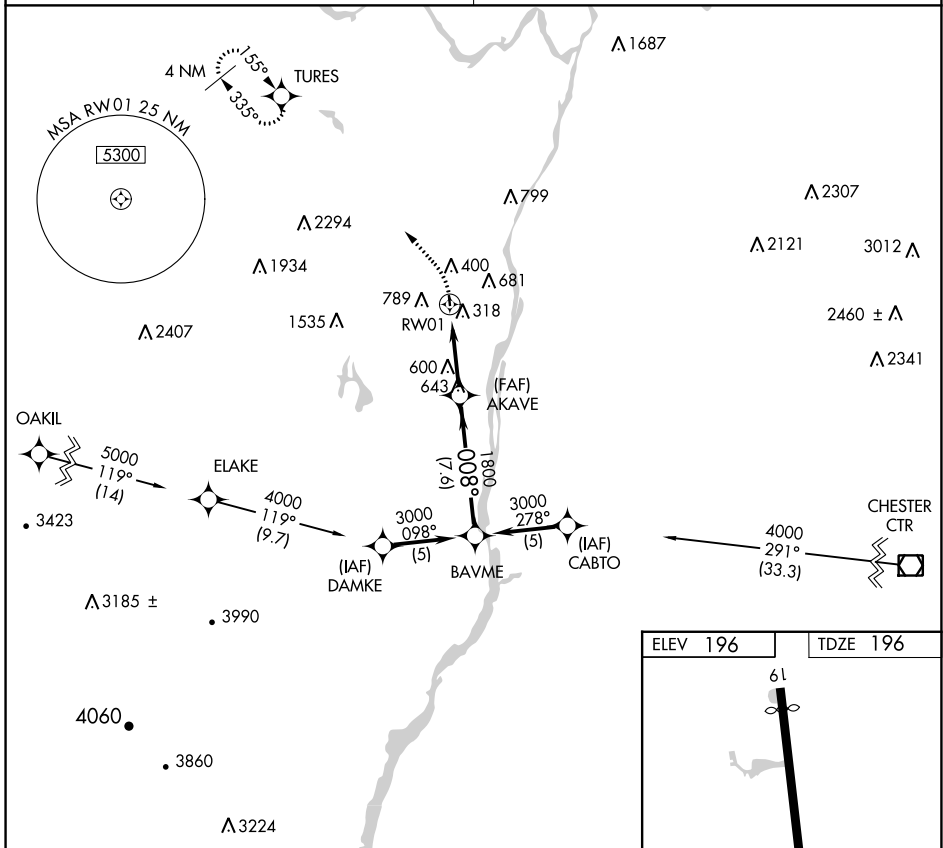
APP CRS	Rwy ldg	2703
008°	TDZE	196
	Apt Elev	196

RNAV (GPS) RWY 1

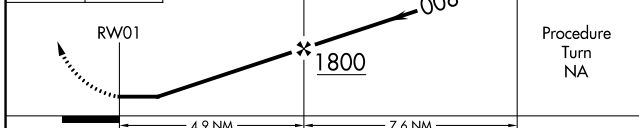
SOUTH ALBANY (4BØ)

RNP APCH.	MISSED APPROACH: Climbing left turn to 3500 direct TURES WP and hold.
▼ Use Albany Intl altimeter setting. Procedure NA at night.	
▲ NA Rwy 1 helicopter visibility reduction below 1 SM NA.	

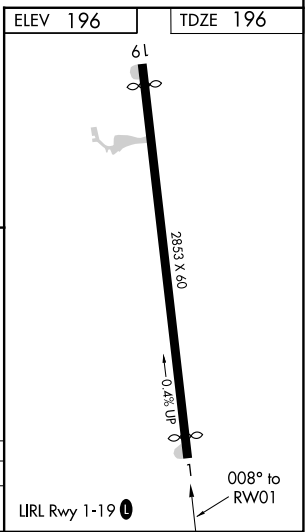
ALBANY APP CON 118.05 263.075	CTAF 122.9 0
---	------------------------



3500	TURES	Visual Segment - Obstacles.	BAYME
------	-------	-----------------------------	-------



CATEGORY	A	B	C	D
LNAV MDA	960-1 764 (800-1)	960-1¼ 764 (800-1¼)		NA



NE-2, 13 JUN 2024 to 11 JUL 2024

NE-2, 13 JUN 2024 to 11 JUL 2024