

VORTAC BRV <b>114.5</b>	APP CRS <b>314°</b>	Rwy Idg TDZE <b>6000</b> <b>196</b>
Chan <b>92</b>		Apt Elev <b>219</b>

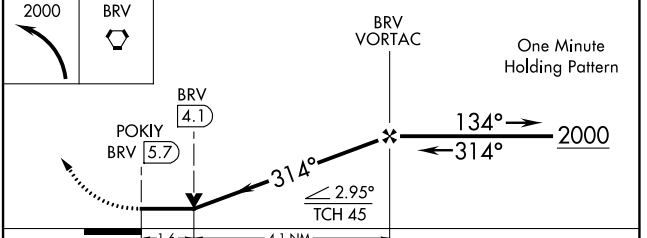
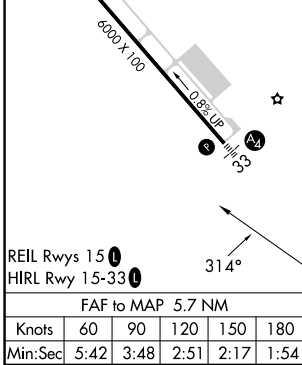
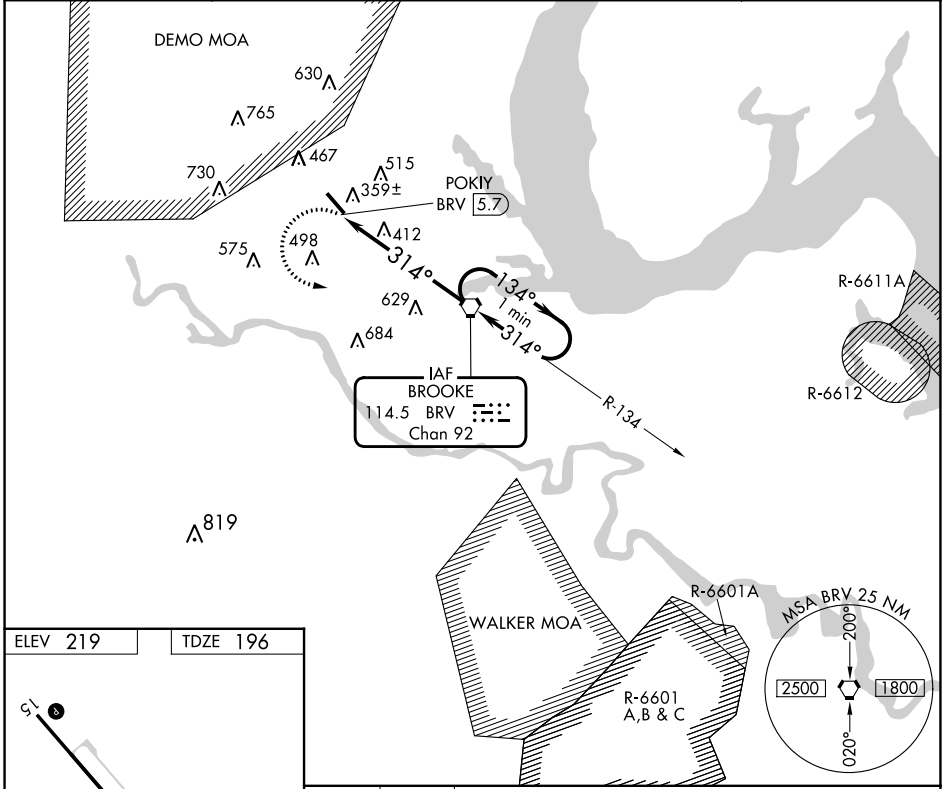
**VOR RWY 33**  
STAFFORD RGNL (R.MN)

**▼** Inoperative table does not apply to Cat C. Circling Rwy 15 NA at night.

MALS 

MISSED APPROACH: Climbing left turn to 2000 direct BRV VORTAC and hold.

AWOS-3 <b>126.325</b>	QUANTICO APP CON* <b>127.05 290.375</b>	GCO <b>135.075</b>	UNICOM <b>122.725 (CTAF) 0</b>
--------------------------	--	-----------------------	-----------------------------------



CATEGORY	A	B	C	D
S-33	740-3/4	544 (600-3/4)	740-1 1/2 544 (600-1 1/2)	740-1 3/4 544 (600-1 3/4)
CIRCLING	740-1 521 (600-1)	820-1 601 (700-1)	820-1 3/4 601 (700-1 3/4)	1040-2 3/4 821 (900-2 3/4)

NE-3, 13 JUN 2024 to 11 JUL 2024

NE-3, 13 JUN 2024 to 11 JUL 2024