

WAAS CH 69409 W16A	APP CRS 162°	Rwy Idg 3248 TDZE 17 Apt Elev 17
--	------------------------	---

RNAV (GPS) RWY 16

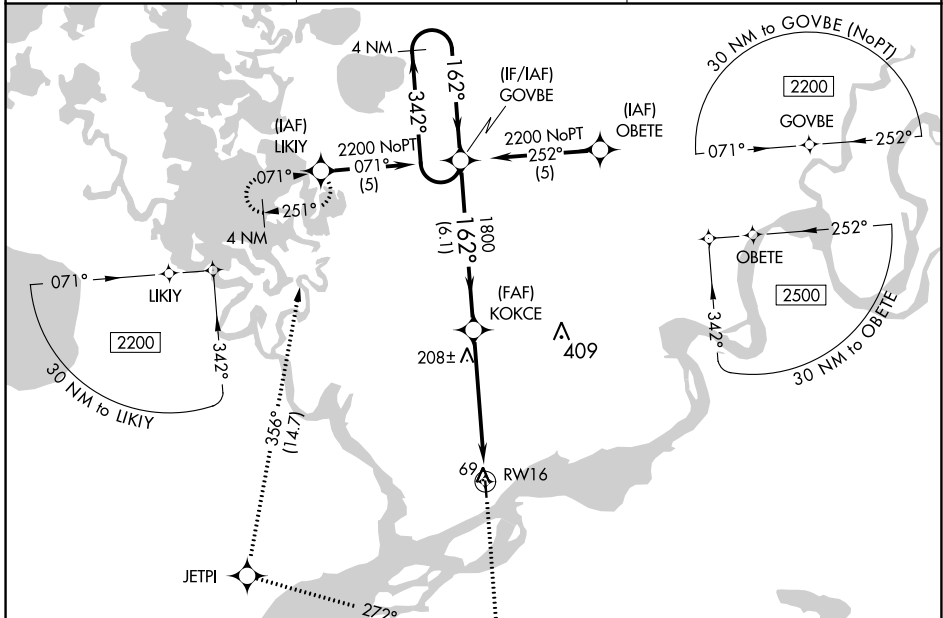
NAPAKIAK (WNA) (PANA)

V DME/DME RNP-0.3 NA. When local altimeter setting not received, use Bethel altimeter setting. Rwy 16 helicopter visibility reduction 1 SM NA. Procedure NA at night for Cat C and D aircraft.

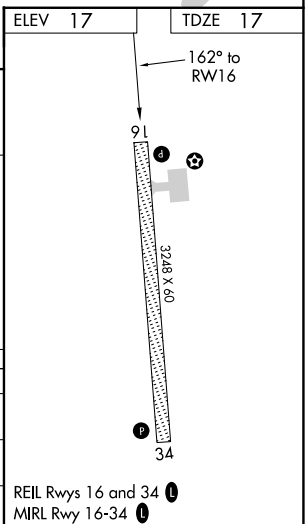
A NA

W MISSED APPROACH: Climb to 2200 direct CUGAV and right turn on track 272° to JETPI on track 356° to LIKIY and hold.

AWOS-3P 121.425	ANCHORAGE CENTER 125.2 372.0	CTAF 122.9
---------------------------	--	----------------------



4 NM Holding Pattern	2200	CUGAV	JETPI	LIKIY
	↑	✦	tr 272°	tr 356°
VGSi and RNAV glidepath not coincident (VGSi Angle 3.00/TCH 26). KOKCE				
GP 3.00° TCH 30	2200	1800	1800	RWY 16
	←342°	162°	162°	
	←162°			
		6.1 NM	5.4 NM	



CATEGORY	A	B	C	D
LPV DA	298-1 281 (300-1)			
LNAV MDA	500-1	483 (500-1)	500-1½ 483 (500-1½)	500-1½ 483 (500-1½)
CIRCLING	500-1	483 (500-1)	540-1½ 523 (600-1½)	680-2 663 (700-2)

AK, 16 MAY 2024 to 11 JUL 2024

AK, 16 MAY 2024 to 11 JUL 2024