

APP CRS	Rwy Idg	4498
253°	TDZE	2241
	Apt Elev	2241

RNAV (GPS) RWY 24

JOHNSON COUNTY (6A.4)

RNP APCH.

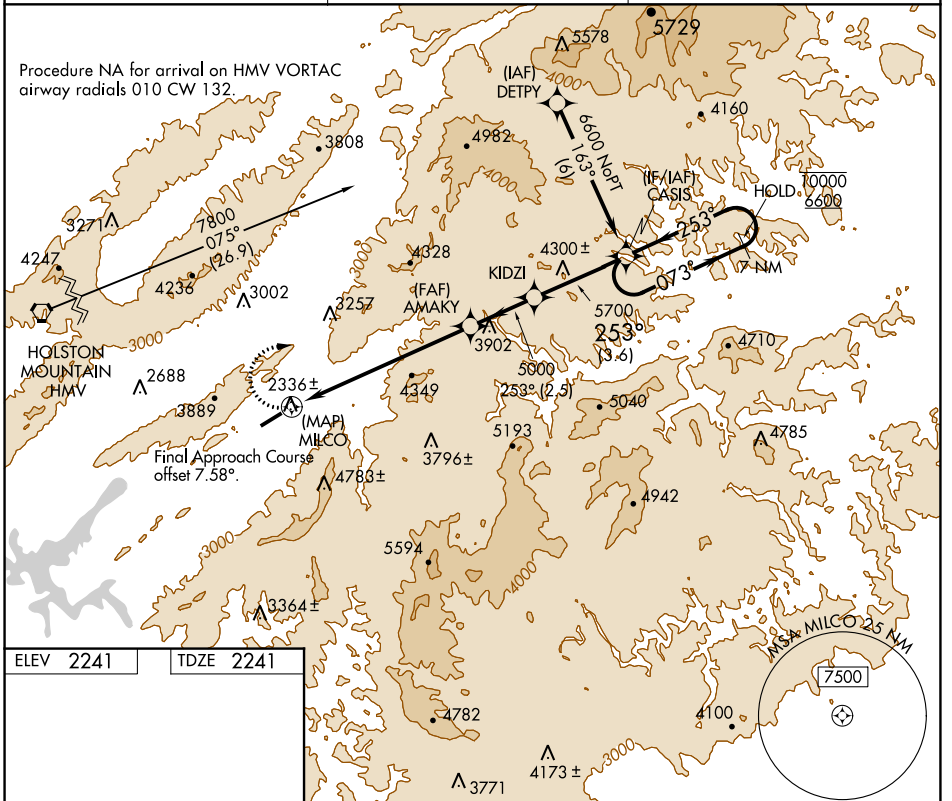
Procedure NA at night. Rwy 24 helicopter visibility reduction below 1 SM NA. When local altimeter setting not received, use Abingdon altimeter setting and increase all MDA 80 feet. Circling NA for Cat C and D southeast of Rwy 6-24.

MISSED APPROACH:
Climbing right turn to 6600
direct CASIS and hold.

AWOS-3
126.225

TRI-CITY APP CON ★
134.425 349.0

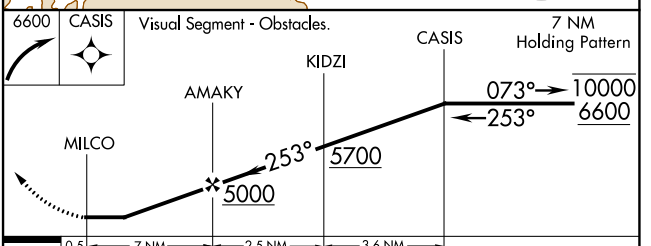
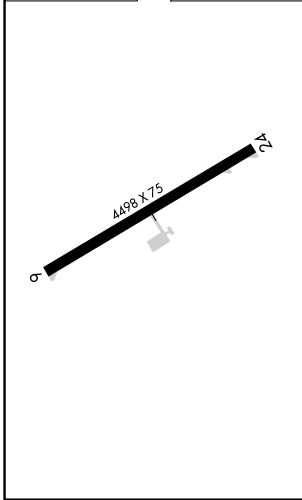
UNICOM
122.7 (CTAF)



SE-1, 13 JUN 2024 to 11 JUL 2024

SE-1, 13 JUN 2024 to 11 JUL 2024

ELEV	2241	TDZE	2241
------	------	------	------



CATEGORY	A	B	C	D
LNAV MDA	4880-1¼ 2639 (2700-1¼)	4880-1½ 2639 (2700-1½)	4880-3 2639 (2700-3)	
CIRCLING	4880-1¼ 2639 (2700-1¼)	4880-1½ 2639 (2700-1½)	4880-3 2639 (2700-3)	