

APP CRS	Rwy Idg	4498
065°	TDZE	2240
	Apt Elev	2241

RNAV (GPS) RWY 6

JOHNSON COUNTY (6A.4)

RNP APCH.

NA
 Circling NA for Cat C southeast of Rwy 6-24. Procedure NA at night. Rwy 6 helicopter visibility reduction below 1 SM NA. When local altimeter setting not received, use Abingdon altimeter setting and increase all MDA 80 feet. Circling NA for Cat B and C when using Abingdon altimeter setting.

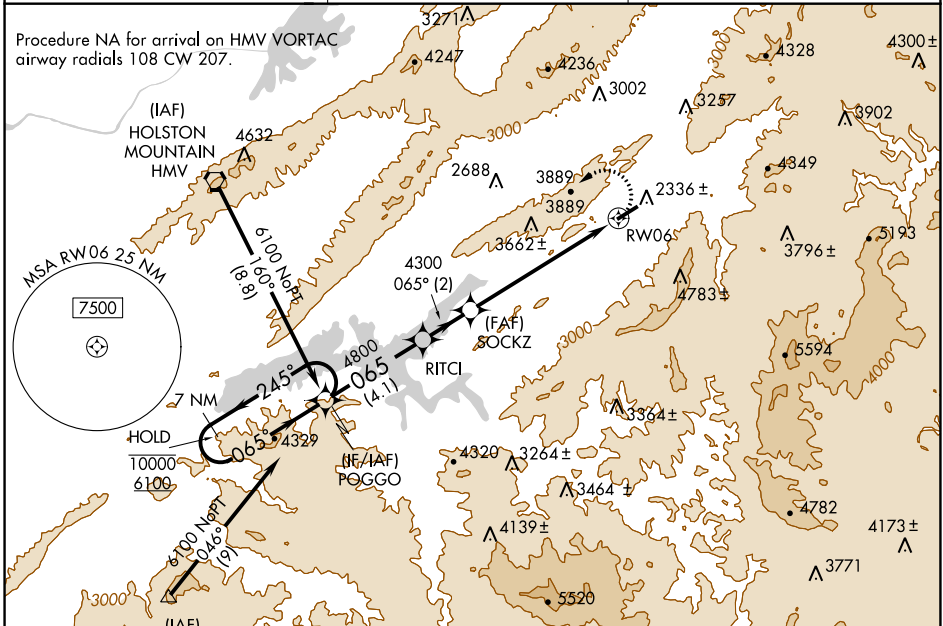
MISSED APPROACH:
 Climbing left turn to 6100 direct POGGO and hold.

AWOS-3
126.225

TRI-CITY APP CON ★
134.425 349.0

UNICOM
122.7 (CTAF)

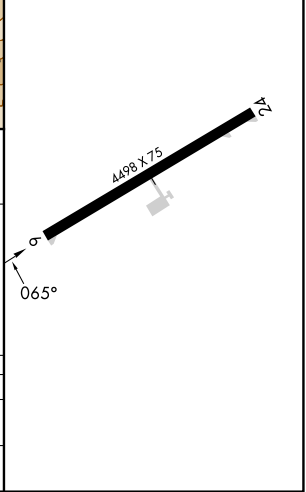
Procedure NA for arrival on HVM VORTAC airway radials 108 CW 207.



SE-1, 13 JUN 2024 to 11 JUL 2024

SE-1, 13 JUN 2024 to 11 JUL 2024

ELEV	2241	TDZE	2240
------	------	------	------



7 NM Holding Pattern	POGGO	Visual Segment - Obstacles.	6100 POGGO
10000 ← 245°	6100 → 065°	RITCI	SOCKZ
		4800	4300
			RWY 06
		4.1 NM	2 NM
			6.2 NM

CATEGORY	A	B	C	D
RNAV MDA	4040-1¼ 1800 (1800-1¼)	4040-1½ 1800 (1800-1½)	4040-3 1800 (1800-3)	
CIRCLING	4040-1¼ 1799 (1800-1¼)	4260-1½ 2019 (2100-1½)	4280-3 2039 (2100-3)	NA