

APP CRS	Rwy Idg	3603
231°	TDZE	231
	Apt Elev	231

RNAV (GPS) RWY 23

BAMBERG COUNTY (99N)

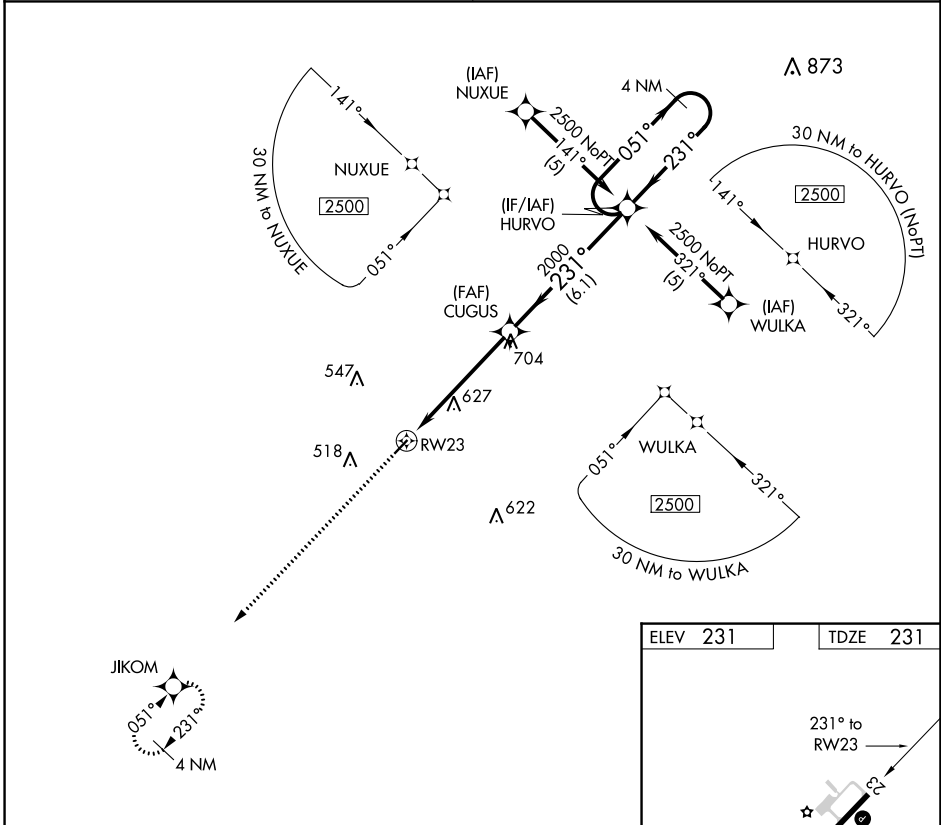
RNP APCH.

∇ Procedure NA at night.
Δ NA Rwy 23 helicopter visibility reduction below 1 SM NA.
 Use Orangeburg Muni altimeter setting, when not received, procedure NA.

MISSED APPROACH: Climb to 2500 direct JIKOM and hold.

COLUMBIA APP CON
124.15 338.2

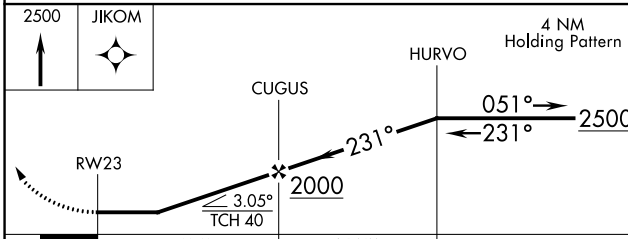
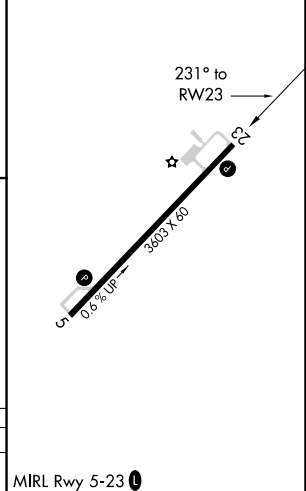
UNICOM
122.8 (CTAF) 0



SE-2, 13 JUN 2024 to 11 JUL 2024

SE-2, 13 JUN 2024 to 11 JUL 2024

ELEV 231	TDZE 231
----------	----------



CATEGORY	A	B	C	D
LNAV MDA	920-1	689 (700-1)	NA	

MIRL Rwy 5-23 0