

APP CRS **076°**
 Rwy Idg **4018**
 TDZE **1901**
 Apt Elev **1907**

RNAV (GPS) RWY 8

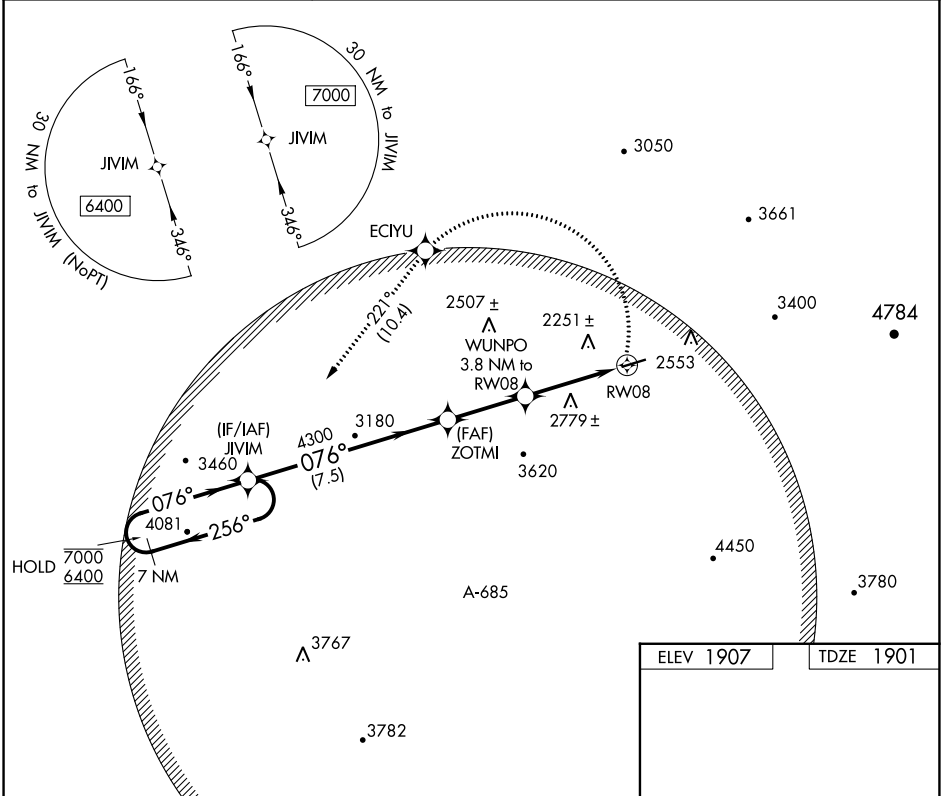
BLAIRSVILLE (DZJ)

RNP APCH - GPS

Procedure NA at night. Rwy 8 helicopter visibility reduction below 1 SM NA. When local altimeter setting not received, procedure NA. Circling NA for Cat D.

MISSED APPROACH: (Do not exceed 210K until JIVIM) Climbing left turn to 6400 direct ECIYU and on track 221° to JIVIM and hold, continue climb-in-hold to 6400.

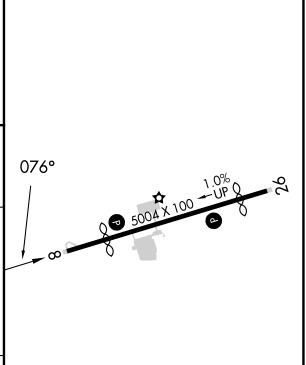
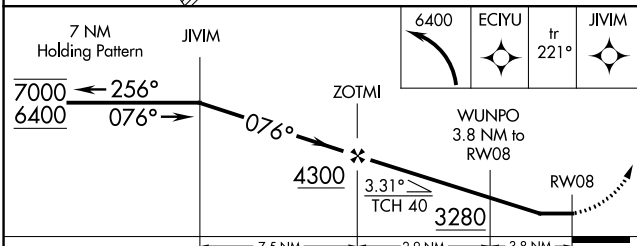
AWOS-3PT **119.325** ATLANTA CENTER **134.8 379.95** UNICOM **122.8 (CTAF) 0**



SE-4, 13 JUN 2024 to 11 JUL 2024

SE-4, 13 JUN 2024 to 11 JUL 2024

ELEV 1907 TDZE 1901



CATEGORY	A	B	C	D
LNNAV MDA	2860-1¼ 959 (1000-1¼)	2860-1½ 959 (1000-1½)	2860-3	959 (1000-3)
CIRCLING	2860-1¼ 953 (1000-1¼)	2940-1½ 1033 (1100-1½)	3180-3 1273 (1300-3)	NA

MIRL Rwy 8-26 0