

WAAS CH <b>65740</b> <b>W24A</b>	APP CRS <b>236°</b>	Rwy Idg <b>6001</b> TDZE <b>4237</b> Apt Elev <b>4265</b>
--	------------------------	---

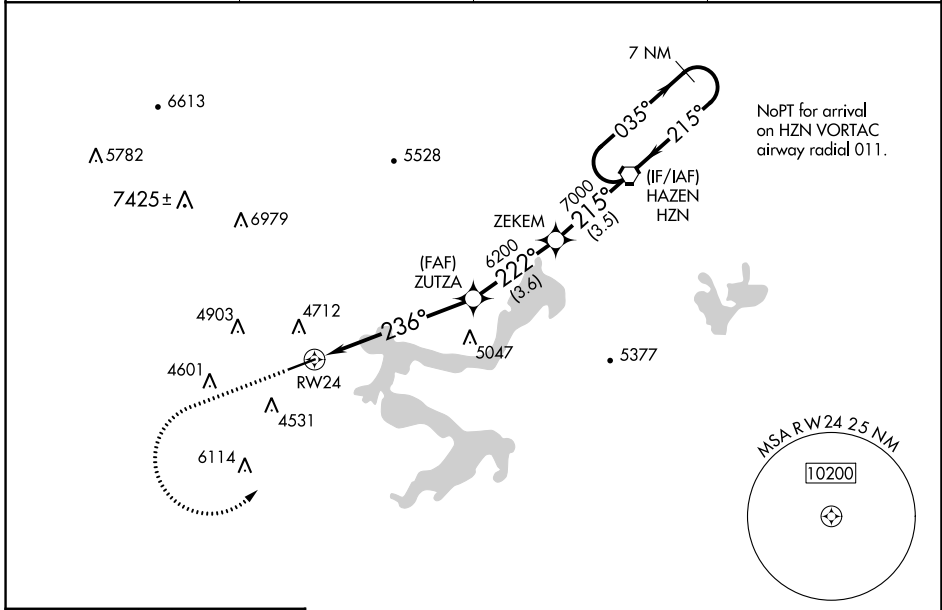
# RNAV (GPS) RWY 24

SILVER SPRINGS (SPZ)

**NA** For uncompensated Baro-VNAV systems, LNAV/VNAV NA below -23°C (-9°F) or above 54°C (130°F). DME/DME RNP-0.3 NA. Use Fallon NAS (Van Voorhis Fld) altimeter setting; when not received, use Reno/Tahoe Intl altimeter setting.

MISSED APPROACH: Climb to 6900 then climbing left turn to 9900 direct HZN VORTAC and hold, continue climb-in-hold to 9900.  
\*Missed approach requires minimum climb of 315 feet per NM to 6900.

AWOS-2 <b>120.475</b>	KNFL ATIS* <b>370.925</b>	NAVY FALLON APP CON <b>120.85 360.2</b>	CTAF <b>122.90</b>
--------------------------	------------------------------	--	-----------------------



SW-4, 13 JUN 2024 to 11 JUL 2024

SW-4, 13 JUN 2024 to 11 JUL 2024

ELEV 4265	TDZE 4237	6900	9900	HZN			
		RWY 24		ZUTZA	ZEKEM	HAZEN HZN	7 NM Holding Pattern
		236°		6200	7000	8000	
		-0.8% UP		6200	7000	8000	
		6.1 NM		3.6 NM	3.5 NM		
		GP 3.00°				TCH 40	
CATEGORY	A	B	C	D			
LPV DA*	4593-1¼		356 (400-1¼)		NA		
LPV DA	5007-3		770 (800-3)		NA		
LNAV/VNAV DA	5209-4		972 (1000-4)		NA		
LNAV MDA	5280-1¼	5280-1½	5280-3	NA			
	1043 (1100-1¼)	1043 (1100-1½)	1043 (1100-3)				
<b>C</b> CIRCLING	5280-1¼	5620-1½	6040-3	NA			
	1015 (1100-1¼)	1355 (1400-1½)	1775 (1800-3)				