

APP CRS Rwy Idg **5500**  
 003° TDZE **696**  
 Apt Elev **718**

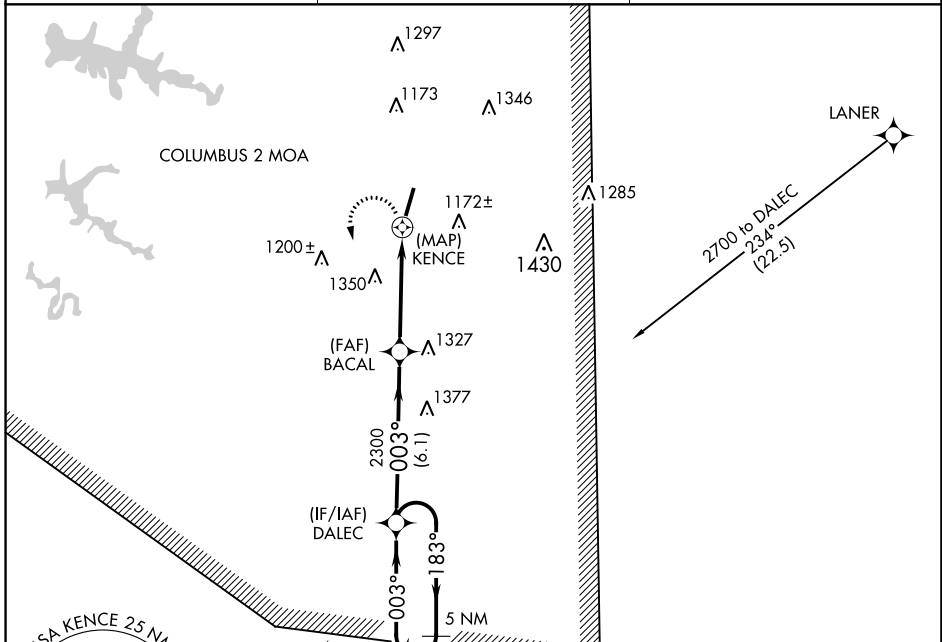
**RNAV (GPS) RWY 2**  
 BILL PUGH FLD (M22)

RNP APCH-GPS.

▼ Procedure NA at night. Rwy 2 helicopter visibility reduction below 1 SM NA. Use Muscle Shoals altimeter setting; when not received, use Decatur altimeter setting and increase all MDA 60 feet.  
 ▲ NA

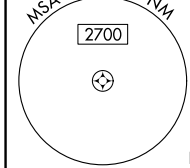
MISSED APPROACH: Climbing left turn to 2700 direct DALEC and hold.

MSL ASOS <b>119.425</b>	MEMPHIS CENTER <b>120.8 307.0</b>	UNICOM <b>122.8 (CTAF) 0</b>
----------------------------	--------------------------------------	---------------------------------

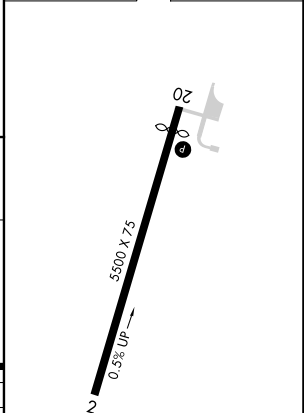
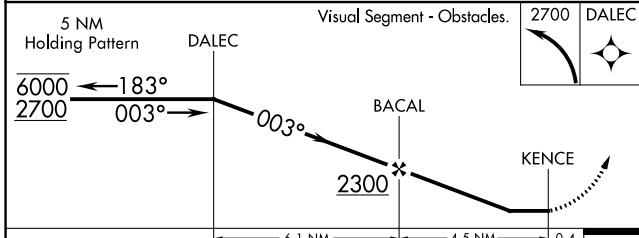


SE-4, 13 JUN 2024 to 11 JUL 2024

SE-4, 13 JUN 2024 to 11 JUL 2024



ELEV 718 **D** TDZE 696



CATEGORY	A	B	C	D
LNNAV MDA	1660-1¼ 964 (1000-1¼)	1660-1½ 964 (1000-1½)	1660-3	964 (1000-3)
CIRCLING	1660-1¼ 942 (1000-1¼)	1660-1½ 942 (1000-1½)	1720-3	1002 (1100-3)

MRL Rwy 2-20 **1**  
 REL Rws 2 and 20 **1**