

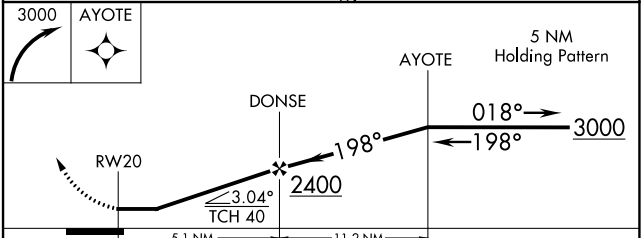
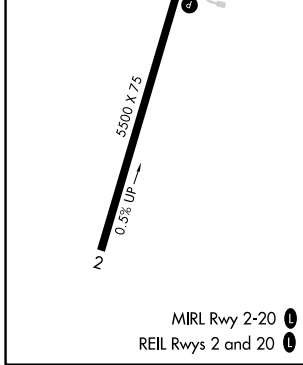
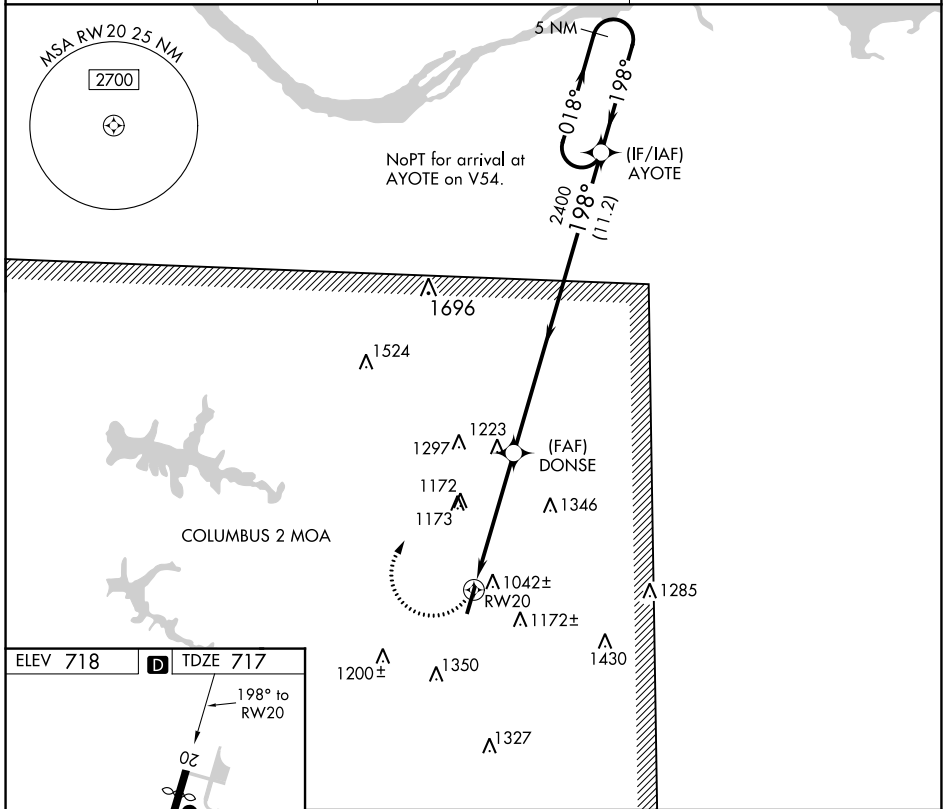
APP CRS	Rwy Idg	5000
198°	TDZE	717
	Apt Elev	718

RNAV (GPS) RWY 20

BILL PUGH FLD (M22)

RNP APCH-GPS.	<p>Use Muscle Shoals altimeter setting; when not received, use Decatur altimeter setting and increase all MDA 60 feet, increase LNAV Cat C/D visibility 1/8 SM and Circling Cat A visibility 1/4 SM. Procedure NA at night. Rwy 20 helicopter visibility reduction below 1 SM NA.</p>	<p>MISSED APPROACH: Climbing right turn to 3000 direct AYOTE and hold.</p>
---------------	---	---

MSL ASOS 119.425	MEMPHIS CENTER 120.8 307.0	UNICOM 122.8 (CTAF) 0
----------------------------	--------------------------------------	---------------------------------



CATEGORY	A	B	C	D
LNAV MDA	1360-1	643 (700-1)	1360-1 ⁷ / ₈	643 (700-1 ⁷ / ₈)
CIRCLING	1520-1 802 (900-1)	1540-1 ¹ / ₄ 822 (900-1 ¹ / ₄)	1720-3	1002 (1100-3)

SE-4, 13 JUN 2024 to 11 JUL 2024

SE-4, 13 JUN 2024 to 11 JUL 2024