

APP CRS	Rwy Idg	5006
008°	TDZE	230
	Apt Elev	237

RNAV (GPS) RWY 1

NORTH PICKENS (3M8)

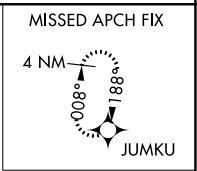
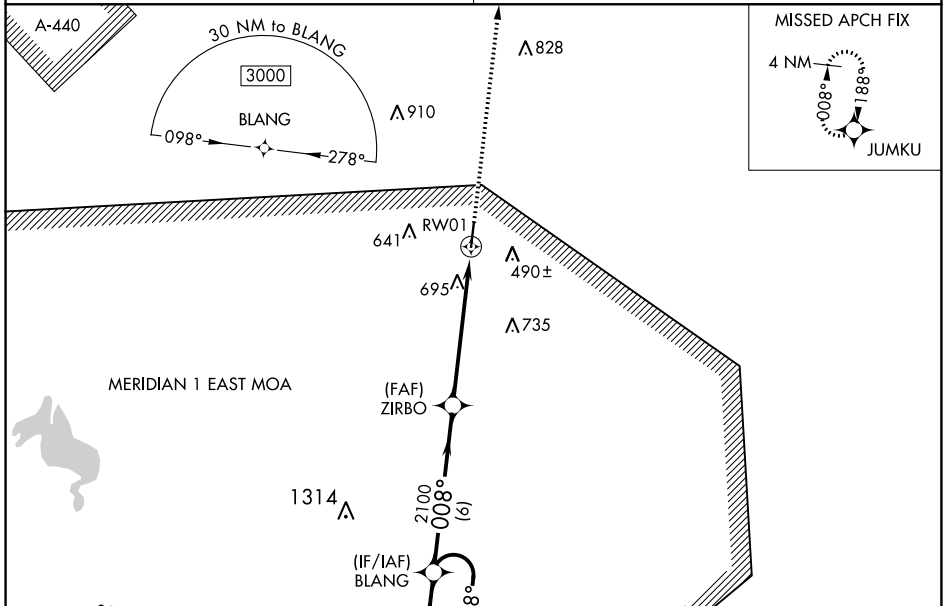
RNP APCH - GPS.

NA Procedure NA at night. Rwy 1 helicopter visibility reduction below 1 SM NA. Obtain local altimeter setting on CTAF; when not received, use Tuscaloosa altimeter setting; increase all MDAs 80 feet and LNAV visibility Cat B ¼ SM and Cats C and D ½ SM; increase Circling visibility all Cats ½ SM.

MISSED APPROACH: Climb to 3000 direct JUMKU and hold.

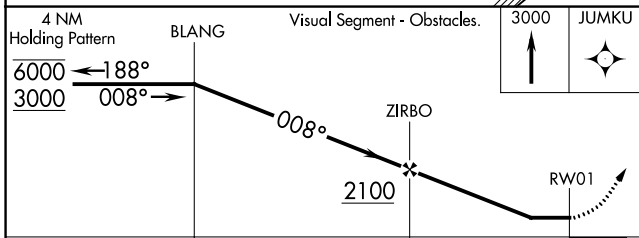
COLUMBUS APP CON ★
135.6 323.275

CTAF
122.9

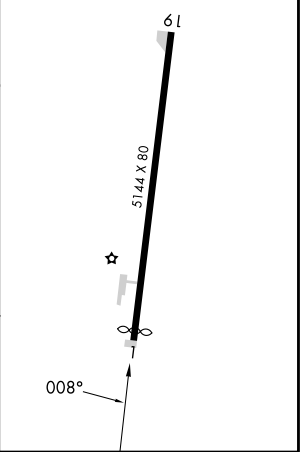


ELEV	237	TDZE	230
------	-----	------	-----

MIRL Rwy 1-19
REIL Rwy 1 and 19



CATEGORY	A	B	C	D
LNAV MDA	960-1	730 (800-1)	960-2	730 (800-2)
CIRCLING	1000-1	763 (800-1)	1000-2¼ 763 (800-2¼)	1040-2½ 803 (900-2½)



SE-4, 13 JUN 2024 to 11 JUL 2024

SE-4, 13 JUN 2024 to 11 JUL 2024