

WAAS CH <b>72729</b> W19A	APP CRS <b>188°</b>	Rwy Idg TDZE Apt Elev	<b>5144</b> <b>237</b> <b>237</b>
---------------------------------	------------------------	-----------------------------	---

# RNAV (GPS) RWY 19

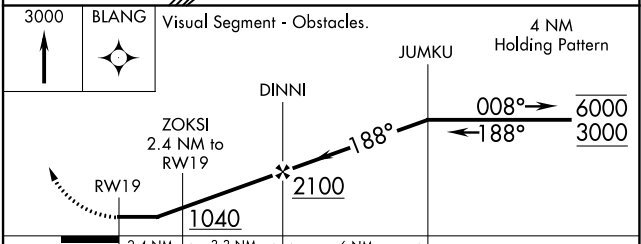
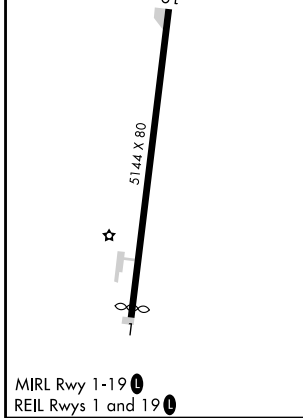
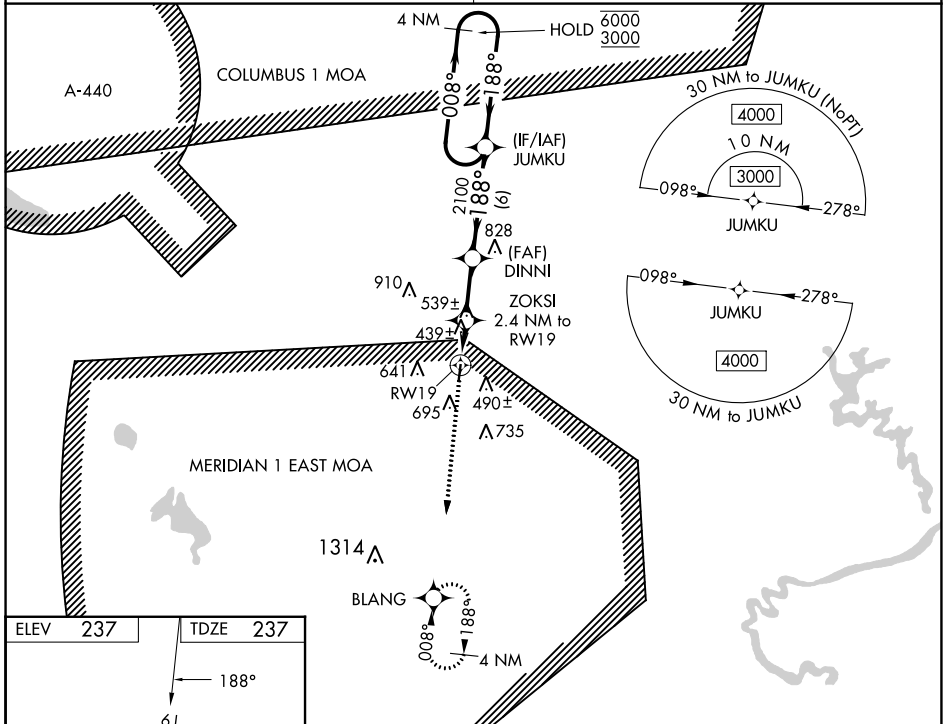
NORTH PICKENS (3M8)

RNP APCH.

Procedure NA at night. Rwy 19 helicopter visibility reduction below 1 SM NA.  
 Obtain local altimeter setting on CTAF; when not received, use Tuscaloosa altimeter setting: increase all MDAs 80 feet; increase LP and LNAV Cat C/D visibility ¼ SM; increase Circling visibility all Cats ½ SM.

MISSED APPROACH: Climb to 3000 direct BLANG and hold.

COLUMBUS APP CON ★ <b>135.6 323.275</b>	CTAF <b>122.9</b>
--	----------------------



CATEGORY	A	B	C	D
LP MDA	700-1	463 (500-1)	700-1½	463 (500-1½)
LNAV MDA	800-1	563 (600-1)	800-1½	563 (600-1½)
CIRCLING	1000-1	763 (800-1)	1000-2¼ 763 (800-2¼)	1040-2½ 803 (900-2½)

SE-4, 13 JUN 2024 to 11 JUL 2024

SE-4, 13 JUN 2024 to 11 JUL 2024