

APP CRS	Rwy Idg	3242
178°	TDZE	27
	Apt Elev	27

RNAV (GPS) RWY 18

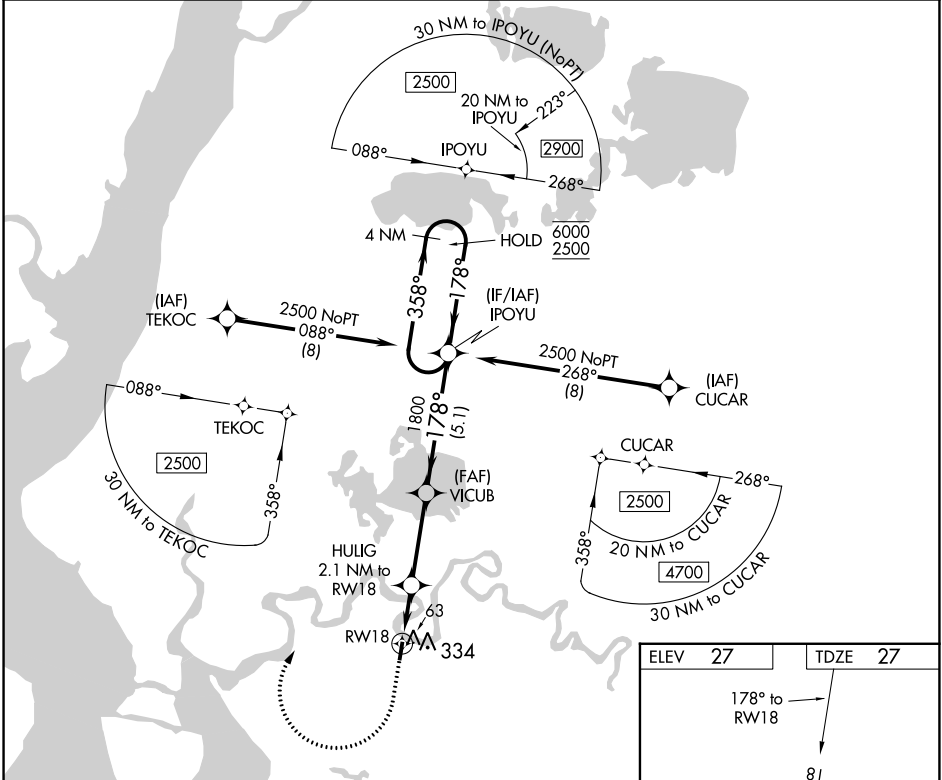
EEK (EEK) (PAEE)

RNP APCH.
 ▼
 ▲ NA Use Bethel altimeter setting, when not received procedure NA.

MISSED APPROACH: Climb to 600 then climbing right turn to 2500 direct IPOYU and hold.

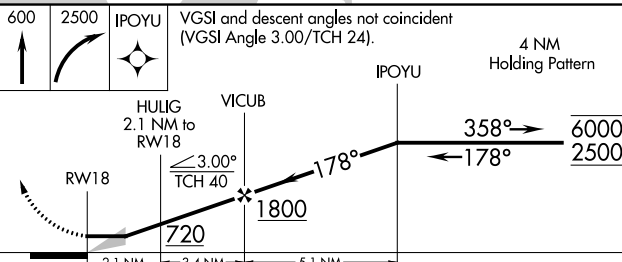
ANCHORAGE CENTER
125.2 372.0

CTAF
122.8

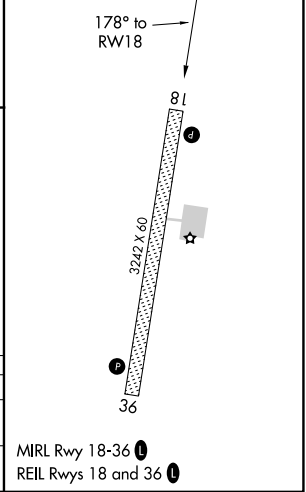


AK, 16 MAY 2024 to 11 JUL 2024

AK, 16 MAY 2024 to 11 JUL 2024



ELEV	27	TDZE	27
------	----	------	----



CATEGORY	A	B	C	D
LNVA MDA	420-1	393 (400-1)		NA
CIRCLING	740-1	713 (800-1)		NA