

WAAS CH 63013 W15A	APP CRS 147°	Rwy Idg 4001 TDZE 21 Apt Elev 24
--	------------------------	---

RNAV (GPS) RWY 15

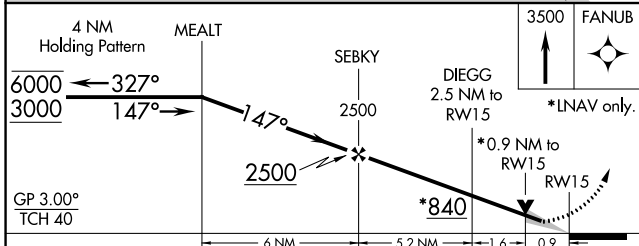
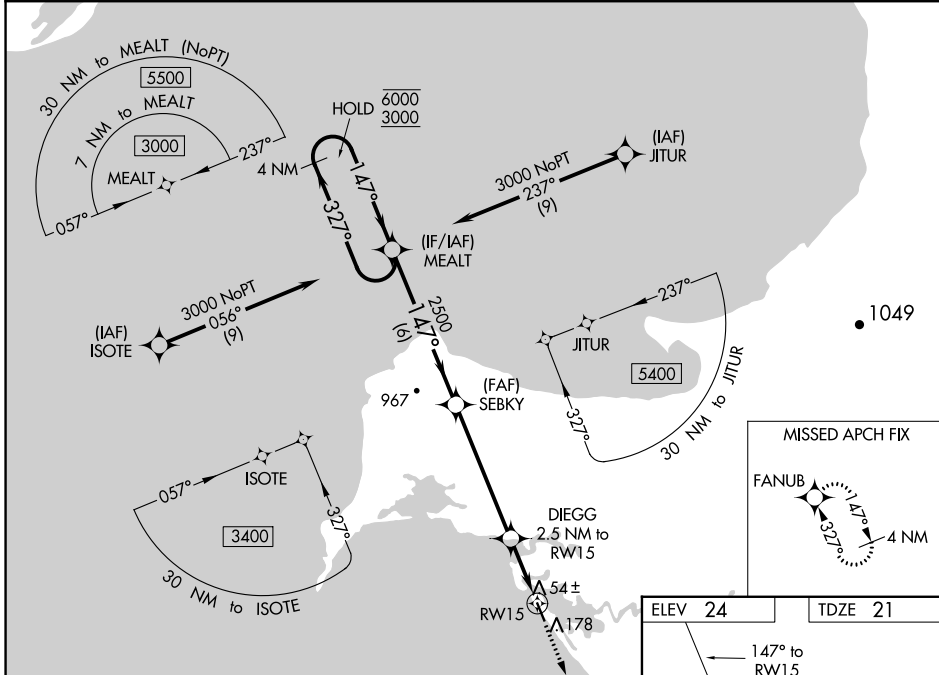
SHAKTOOLIK (2C7) (PFSH)

RNP APCH.

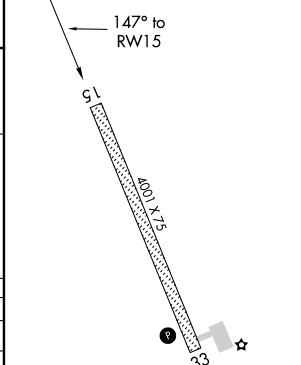
⚠ Baro-VNAV and VDP NA when using Unalakleet altimeter setting. For uncompensated Baro-VNAV systems, LNAV/VNAV NA below -20°C or above 54°C. When local altimeter setting not received use Unalakleet altimeter setting and increase all DA 72 feet and all MDA 80 feet; increase LNAV Cats C and D visibility 1/8 SM, and Circling Cat D visibility 1/4 SM.

MISSED APPROACH: Climb to 3500 direct FANUB and hold, continue climb-in-hold to 3500.

AWOS-3P 124.175	ANCHORAGE CENTER 135.7 335.5	NOME RADIO 122.3	UNICOM 122.8 (CTAF)
---------------------------	--	----------------------------	-------------------------------



ELEV 24	TDZE 21
----------------	----------------



CATEGORY	A	B	C	D
LPV DA		271-1	250 (300-1)	
LNAV/VNAV DA		271-1	250 (300-1)	
LNAV MDA		360-1	339 (400-1)	
C CIRCLING	480-1	456 (500-1)	480-1 1/2 456 (500-1 1/2)	740-2 1/4 716 (800-2 1/4)

REIL Rwy 33 **Ⓛ**
MIRL Rwy 15-33 **Ⓛ**

AK, 16 MAY 2024 to 11 JUL 2024

AK, 16 MAY 2024 to 11 JUL 2024