

WAAS CH <b>45743</b> <b>W33A</b>	APP CRS <b>333°</b>	Rwy Idg TDZE Apt Elev	<b>3100</b> <b>192</b> <b>192</b>
--	------------------------	-----------------------------	---

# RNAV (GPS) RWY 33

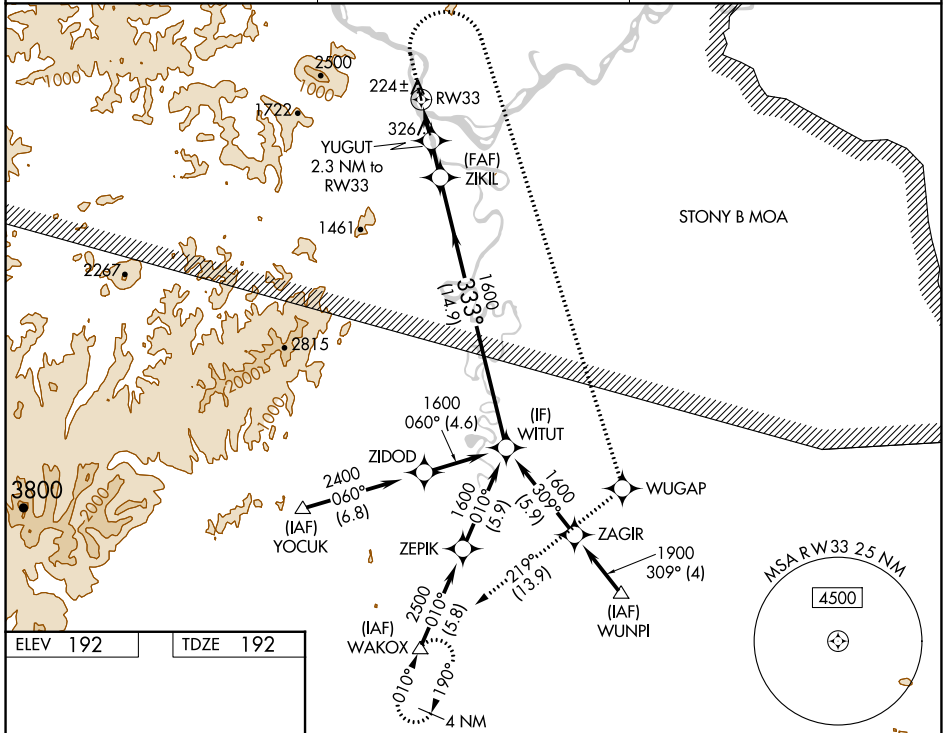
SLEETMUTE (SLQ)(PASL)

RNP APCH.

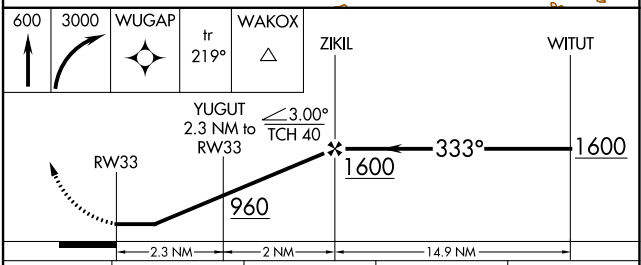
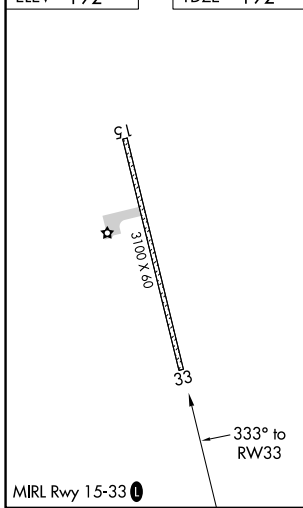
**T** Circling NA west of Rwy 15-33. Procedure NA at night.  
**A** Rwy 33 helicopter visibility reduction below 1 SM NA.  
**C** -37°C

MISSED APPROACH: Climb to 600, then climbing right turn to 3000 direct WUGAP, then track 219° to WAKOX and hold.

AWOS-3P <b>134.85</b>	ANCHORAGE CENTER <b>128.5 379.9</b>	UNICOM <b>122.8 (CTAF)</b>
--------------------------	--	-------------------------------



ELEV 192	TDZE 192
----------	----------



CATEGORY	A	B	C	D
LP MDA	580-1	388 (400-1)	NA	
LNAV MDA	900-1	708 (800-1)	NA	
<b>C</b> CIRCLING	900-1 708 (800-1)	960-1 768 (800-1)	NA	

AK, 16 MAY 2024 to 11 JUL 2024

AK, 16 MAY 2024 to 11 JUL 2024