

WAAS CH <b>56325</b> <b>W21A</b>	APP CRS <b>199°</b>	Rwy Idg TDZE <b>2026</b> Apt Elev <b>2031</b>	<b>3892</b>
--	------------------------	---	-------------

# RNAV (GPS) RWY 21

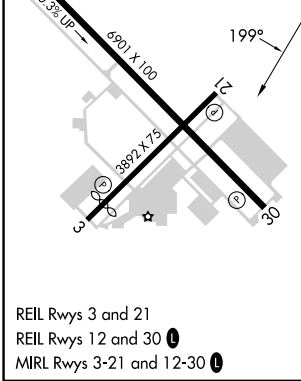
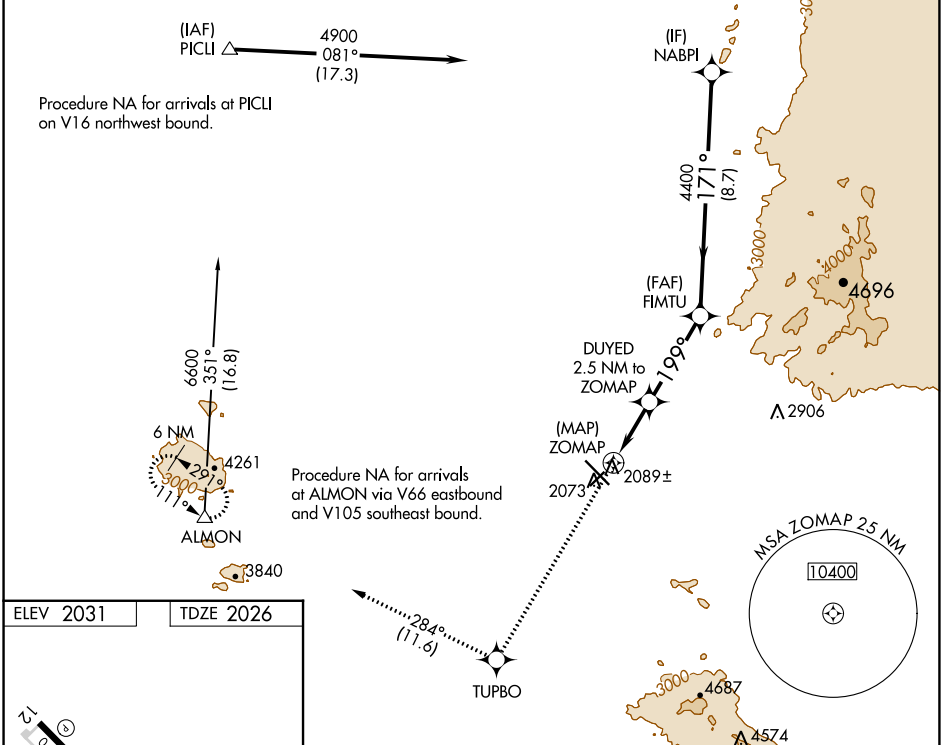
MARANA RGNL (AVQ)

RNP APCH.

**NA** Rwy 21 helicopter visibility reduction below 1 SM NA. When local altimeter setting not received, use Ryan Fld altimeter setting and increase all MDAs 100 feet, increase LP Cat C visibility  $\frac{1}{8}$  SM and increase LNAV Cat C visibility  $\frac{1}{4}$  SM.

MISSED APPROACH: Climb to 6700 direct TUPBO and on track 284° to ALMON and hold, continue climb-in-hold 6700.

AWOS-3 <b>118.375</b>	TUCSON APP CON <b>119.4 318.1</b>	UNICOM <b>123.0 (CTAF)</b>
--------------------------	--------------------------------------	-------------------------------



ELEV 2031	TDZE 2026				
6700	TUPBO	ALMON	VGSI and descent angles not coincident (VGSI Angle 2.91/TCH 41).		
↑	✧	△	NABPI		
ZOMAP		FIMTU	4900		
DUYED 2.5 NM to ZOMAP		≤ 3.35° TCH 40	4400		
3120		199°		171°	
0.5		2.5 NM		3.6 NM	
0.5		2.5 NM		8.7 NM	
CATEGORY	A	B	C	D	
LP MDA	2340-1 314 (400-1)			NA	
LNAV MDA	2640-1 614 (700-1)		2640-1 $\frac{3}{4}$ 614 (700-1 $\frac{3}{4}$ )		NA

SW-4, 13 JUN 2024 to 11 JUL 2024

SW-4, 13 JUN 2024 to 11 JUL 2024