

| | | |
|-------------|----------|-------------|
| APP CRS | Rwy Idg | 5003 |
| 011° | TDZE | 62 |
| | Apt Elev | 62 |

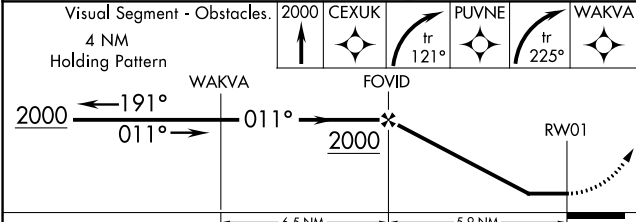
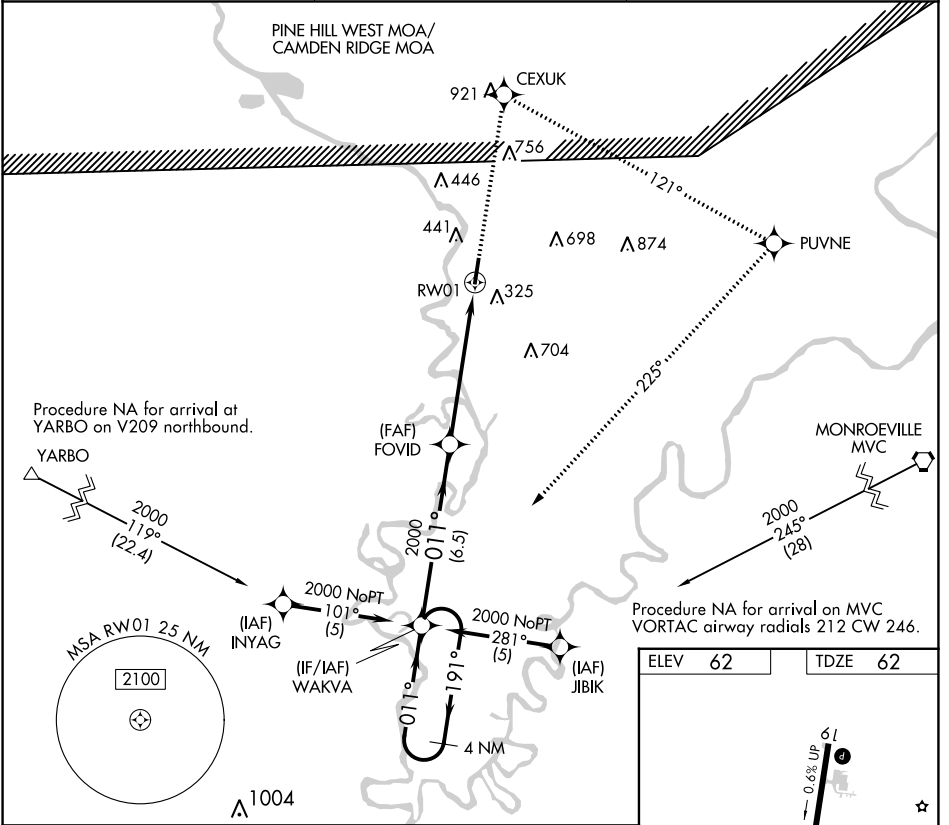
RNAV (GPS) RWY 1

JACKSON MUNI (4R3)

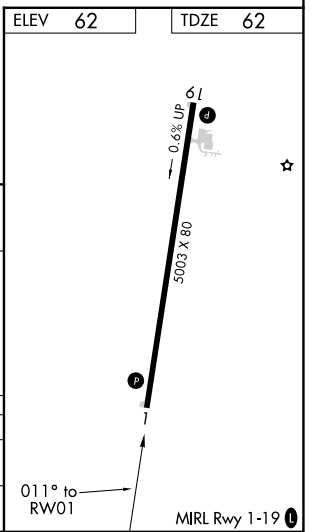
RNP APCH. Procedure NA at night. Rwy 1 helicopter visibility reduction below 1 SM NA. Use Evergreen altimeter setting, when not received, use Mobile Rgnl altimeter setting and increase all MDA 20 feet.

MISSED APPROACH: Climb to 2000 direct CEXUK and right turn on track 121° to PUVNE and right turn on track 225° to WAKVA and hold.

| | | |
|----------------|-----------------------|---------------|
| GZH ASOS | HOUSTON CENTER | CTAF |
| 133.425 | 127.65 285.475 | 122.90 |



| CATEGORY | A | B | C | D |
|----------|-------------------------------|------------------------------|-------------------------------|------------------------------|
| LNVA MDA | 900-1 838 (900-1) | 900-1 1/4 838 (900-1 1/4) | 900-2 1/2 838 (900-2 1/2) | 900-2 3/4 838 (900-2 3/4) |
| CIRCLING | 980-1 1/4 918 (1000-1 1/4) | | 980-2 3/4 918 (1000-2 3/4) | 1140-3 1078 (1100-3) |



SE-4, 13 JUN 2024 to 11 JUL 2024

SE-4, 13 JUN 2024 to 11 JUL 2024