

APP CRS	Rwy Idg	5003
191°	TDZE	39
	Apt Elev	62

RNAV (GPS) RWY 19

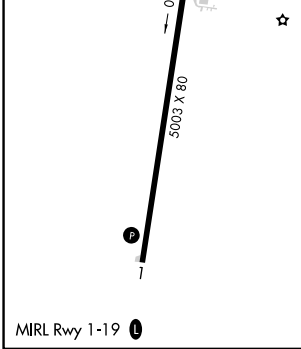
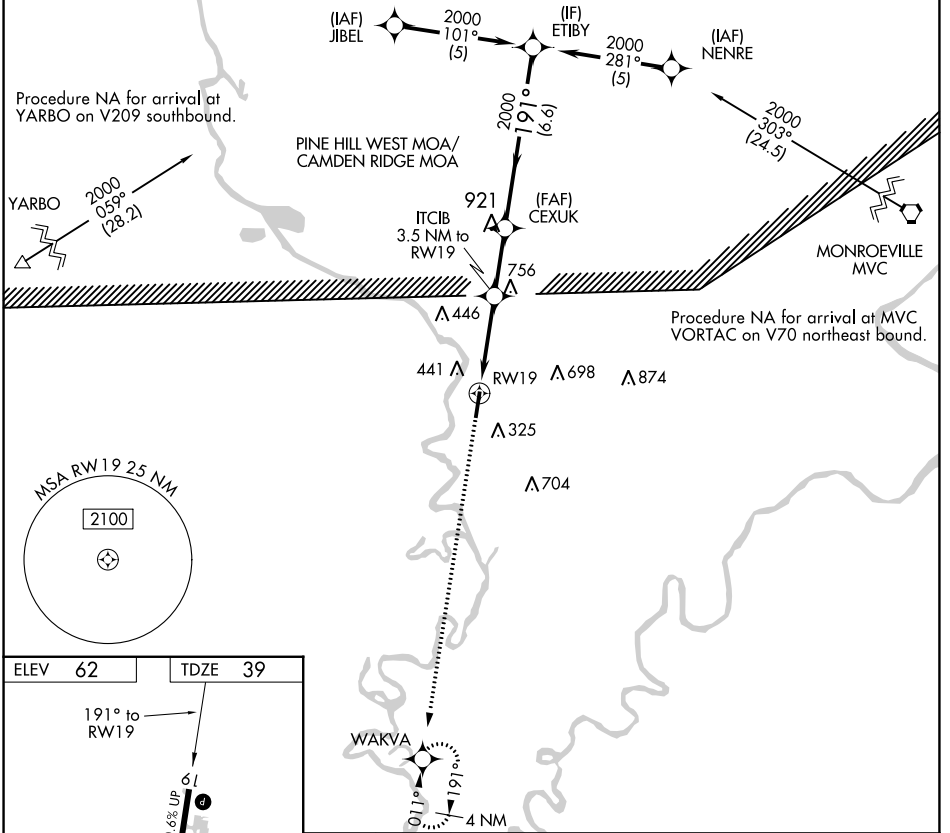
JACKSON MUNI (4R3)

▼ DME/DME RNP-0.3 NA. Procedure NA at night. Visibility reduction by helicopters NA. Use Evergreen altimeter setting; when not received, use Mobile Rgnl altimeter setting and increase all MDA 20 feet.

▲ NA

MISSED APPROACH: Climb to 2000 direct WAKVA and hold.

GZH ASOS 133.425	HOUSTON CENTER 127.65 285.475	CTAF 122.90
----------------------------	---	-----------------------



2000	WAKVA	VGSI and descent angles not coincident (VGSI Angle 3.00/TCH 39).		ETIBY
↑	✧	CEXUK	2000	Procedure Turn NA
		ITCIB 3.5 NM to RW19	191°	
		RW19	1320	
		3.5 NM	2.5 NM	6.6 NM
CATEGORY	A	B	C	D
LNAV MDA	1000-1¼ 961 (1000-1¼)	1000-1½ 961 (1000-1½)	1000-3	961 (1000-3)
CIRCLING	1000-1¼ 938 (1000-1¼)	1000-1½ 938 (1000-1½)	1000-3 938 (1000-3)	1140-3 1078 (1100-3)

SE-4, 13 JUN 2024 to 11 JUL 2024

SE-4, 13 JUN 2024 to 11 JUL 2024