

# DORRL TWO DEPARTURE (RNAV)

MIAMI DEP CON  
125.5 354.1  
AWOS-3  
118.375

**TOP ALTITUDE:  
ASSIGNED BY ATC**

RNAV 1 - DME/DME/IRU or GPS.

RADAR required.

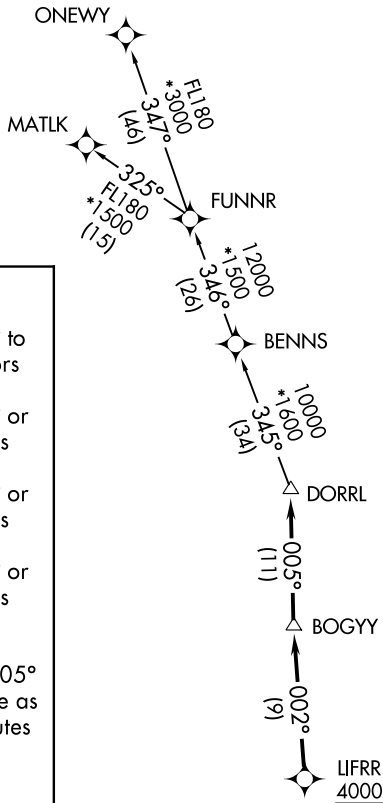
NOTE: For turbo-props/props filed at or above 13000.

### TAKEOFF MINIMUMS

Rwy 10: Standard with minimum climb of 500'/NM to 2500.

Rwys 18, 28: Standard with minimum climb of 500'/NM to 1900.

Rwy 36: Standard with minimum climb of 500'/NM to 2200.



### DEPARTURE ROUTE DESCRIPTION

TAKEOFF RUNWAY 10: Climb on heading 096° to 2000, or as assigned by ATC for RADAR vectors to cross LIFRR at or above 4000, thence. . . .

TAKEOFF RUNWAY 18: Climb on heading 185° or as assigned by ATC for RADAR vectors to cross LIFRR at or above 4000, thence. . . .

TAKEOFF RUNWAY 28: Climb on heading 276° or as assigned by ATC for RADAR vectors to cross LIFRR at or above 4000, thence. . . .

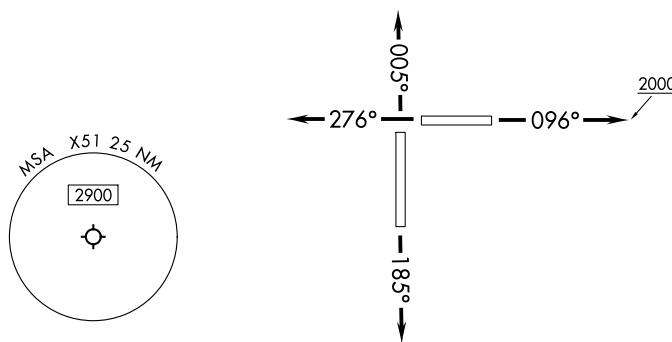
TAKEOFF RUNWAY 36: Climb on heading 005° or as assigned by ATC for RADAR vectors to cross LIFRR at or above 4000, thence. . . .

. . . .on track 002° to BOGY, then on track 005° to DORRL then on (transition), maintain altitude as assigned by ATC, expect filed altitude 10 minutes after departure.

MATLK TRANSITION (DORRL2.MATLK)  
ONEWY TRANSITION (DORRL2.ONEWY)

SE-3. 13 JUN 2024 to 11 JUL 2024

SE-3. 13 JUN 2024 to 11 JUL 2024



NOTE: Chart not to scale.