

(LIFRR2.LIFRR) 24081

AL-10263 (FAA)

MIAMI HOMESTEAD GENERAL AVIATION (X51)

# LIFRR TWO DEPARTURE (RNAV)

HOMESTEAD, FLORIDA

**TOP ALTITUDE:  
ASSIGNED BY ATC**

MIAMI DEP CON  
125.5 354.1  
AWOS-3  
118.375  
CTAF  
122.8

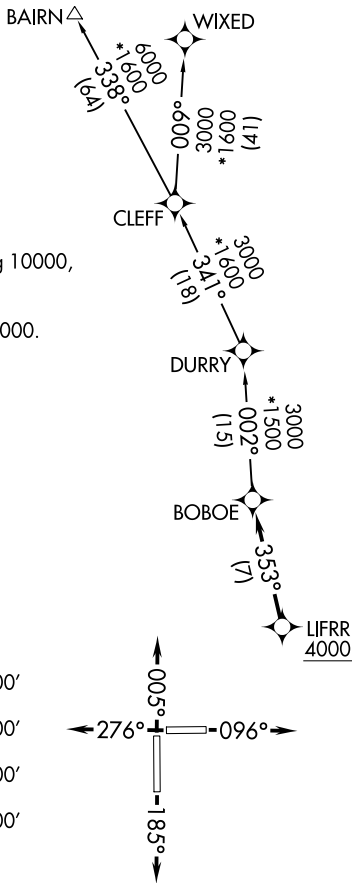
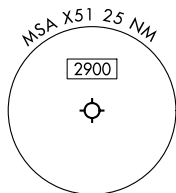
RNAV 1 - DME/DME/IRU or GPS.

RADAR required for non-GPS  
equipped aircraft.

NOTE: Accelerate to 250K until leaving 10000,  
if unable, advise ATC.

NOTE: Jet aircraft only.

NOTE: For aircraft filed at or below 12000.



SE-3, 13 JUN 2024 to 11 JUL 2024

SE-3, 13 JUN 2024 to 11 JUL 2024

### TAKEOFF MINIMUMS

- Rwy 10: Standard with minimum climb of 500' per NM to 2400.
- Rwy 18: Standard with minimum climb of 500' per NM to 1800.
- Rwy 28: Standard with minimum climb of 500' per NM to 1900.
- Rwy 36: Standard with minimum climb of 500' per NM to 2200.

NOTE: Chart not to scale.

### DEPARTURE ROUTE DESCRIPTION

TAKEOFF RUNWAY 10: Climb on heading 096° or as assigned by ATC, thence. . .

TAKEOFF RUNWAY 18: Climb on heading 185° or as assigned by ATC, thence. . .

TAKEOFF RUNWAY 28: Climb on heading 276° or as assigned by ATC, thence. . .

TAKEOFF RUNWAY 36: Climb on heading 005° or as assigned by ATC, thence. . .

. . .for RADAR vector to cross LIFRR at or above 4000, then on track 353° to BOBOE, then on assigned transition, maintain ATC assigned altitude, expect clearance to filed altitude within 10 minutes after departure.

BAIRN TRANSITION (LIFRR2.BAIRN)

WIXED TRANSITION (LIFRR2.WIXED)

# LIFRR TWO DEPARTURE (RNAV)

(LIFRR2.LIFRR) 21MAR24

HOMESTEAD, FLORIDA

MIAMI HOMESTEAD GENERAL AVIATION (X51)