

(MELLZ2.MELLZ) 22139

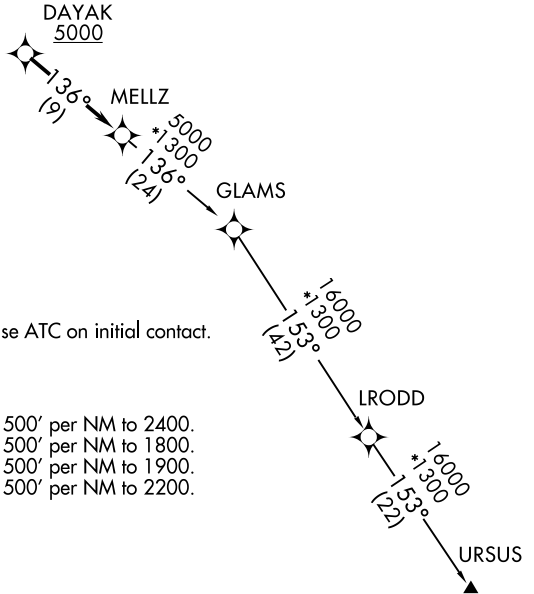
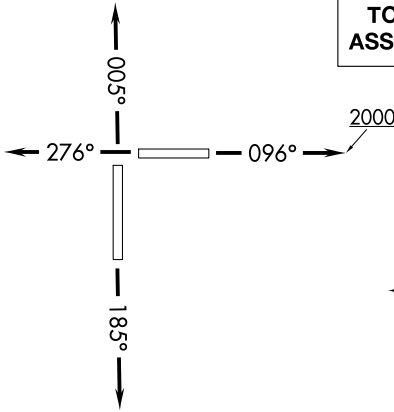
AL-10263 (FAA)

MELLZ TWO DEPARTURE (RNAV)

MIAMI HOMESTEAD GENERAL AVIATION (X51)
HOMESTEAD, FLORIDA

**TOP ALTITUDE:
ASSIGNED BY ATC**

AWOS-3
118.375
KHST ATIS*
132.275 269.9
TMB ATIS
124.0
CTAF
122.8
MIAMI DEP CON
125.5 354.1



NOTE: If unable to accept climb rate, advise ATC on initial contact.

TAKEOFF MINIMUMS

- Rwy 10: Standard with minimum climb of 500' per NM to 2400.
- Rwy 18: Standard with minimum climb of 500' per NM to 1800.
- Rwy 28: Standard with minimum climb of 500' per NM to 1900.
- Rwy 36: Standard with minimum climb of 500' per NM to 2200.

RNAV 1-DME/DME/IRU or GPS.

RADAR required for non-GPS equipped aircraft.

NOTE: Chart not to scale.

DEPARTURE ROUTE DESCRIPTION

TAKEOFF RUNWAY 10: Climb on heading 096° to 2000 then as assigned by ATC for RADAR vectors to cross DAYAK at or above 5000 thence. . . .

TAKEOFF RUNWAY 18: Climb on heading 185° or as assigned by ATC for RADAR vectors to cross DAYAK at or above 5000 thence. . . .

TAKEOFF RUNWAY 28: Climb on heading 276° or as assigned by ATC for RADAR vectors to cross DAYAK at or above 5000 thence. . . .

TAKEOFF RUNWAY 36: Climb on heading 005° or as assigned by ATC for RADAR vectors to cross DAYAK at or above 5000 thence. . . .

. . . on track 136° to MELLZ, then on assigned transition. Maintain ATC assigned altitude, expect clearance to filed altitude within 10 minutes after departure.

GLAMS TRANSITION (MELLZ2.GLAMS)

URSUS TRANSITION (MELLZ2.URSUS)

MELLZ TWO DEPARTURE (RNAV)

(MELLZ2.MELLZ) 19MAY22

HOMESTEAD, FLORIDA
MIAMI HOMESTEAD GENERAL AVIATION (X51)

SE-3, 13 JUN 2024 to 11 JUL 2024

SE-3, 13 JUN 2024 to 11 JUL 2024