

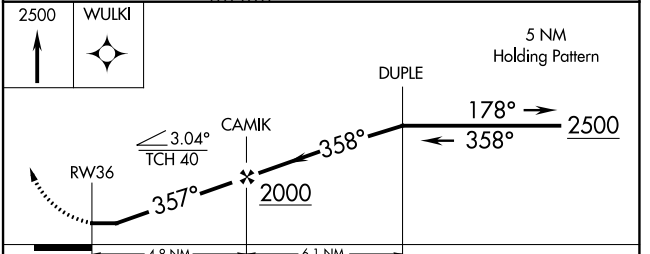
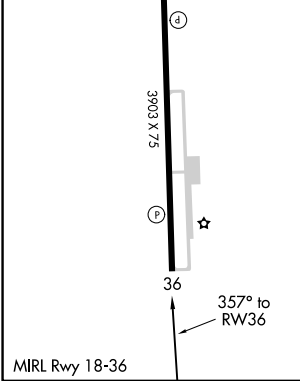
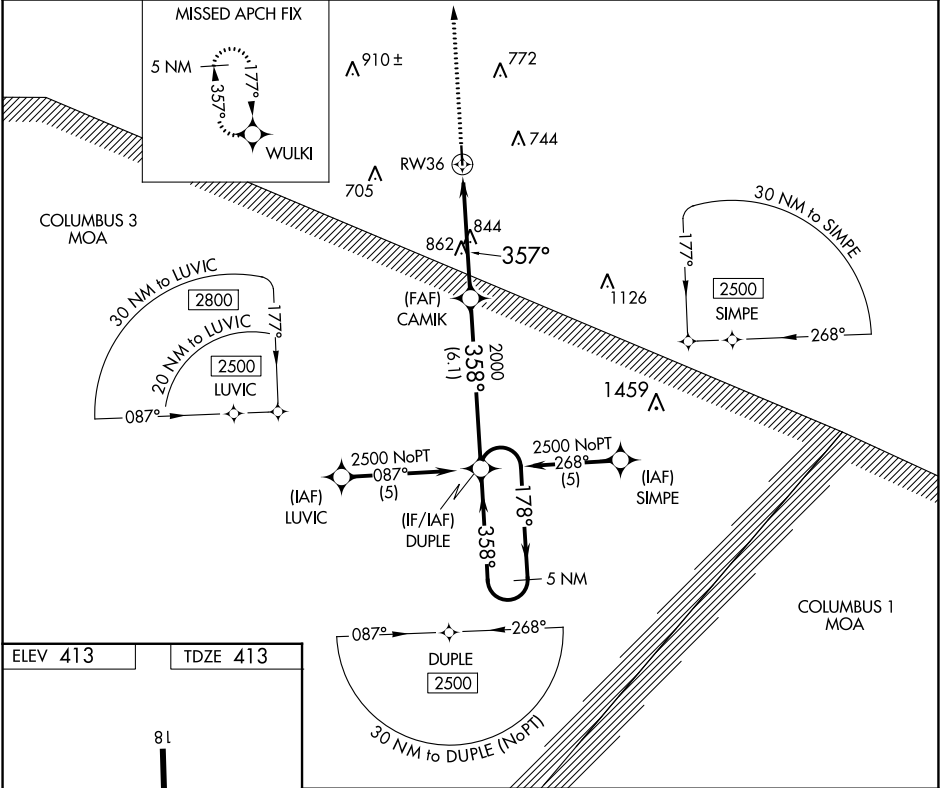
APP CRS **357°**  
 Rwy Idg **3903**  
 TDZE **413**  
 Apt Elev **413**

**RNAV (GPS) RWY 36**  
 NEW ALBANY/UNION COUNTY (M72)

**▼** Use Tupelo altimeter setting, if not received, use Oxford altimeter setting and increase all MDAs 20 feet. Procedure NA at night. DME/DME RNP-0.3 NA.  
**▲ NA** Visibility reduction by helicopters NA.

**MISSED APPROACH:** Climb to 2500 direct WULKI and hold.

|                                   |  |                                      |
|-----------------------------------|--|--------------------------------------|
| <b>TUP ASOS</b><br><b>133.525</b> | <b>MEMPHIS CENTER</b><br><b>135.9 273.55</b> | <b>UNICOM</b><br><b>122.8 (CTAF)</b> |
|-----------------------------------|--|--------------------------------------|



| CATEGORY | A                     | B                       | C                       | D  |
|----------|-----------------------|-------------------------|-------------------------|----|
| LNAV MDA | 1220-1<br>807 (900-1) | 1220-1¼<br>807 (900-1¼) | 1220-2¼<br>807 (900-2¼) | NA |
| CIRCLING | 1220-1<br>807 (900-1) | 1220-1¼<br>807 (900-1¼) | 1220-2¼<br>807 (900-2¼) | NA |

SC-4, 13 JUN 2024 to 11 JUL 2024

SC-4, 13 JUN 2024 to 11 JUL 2024