

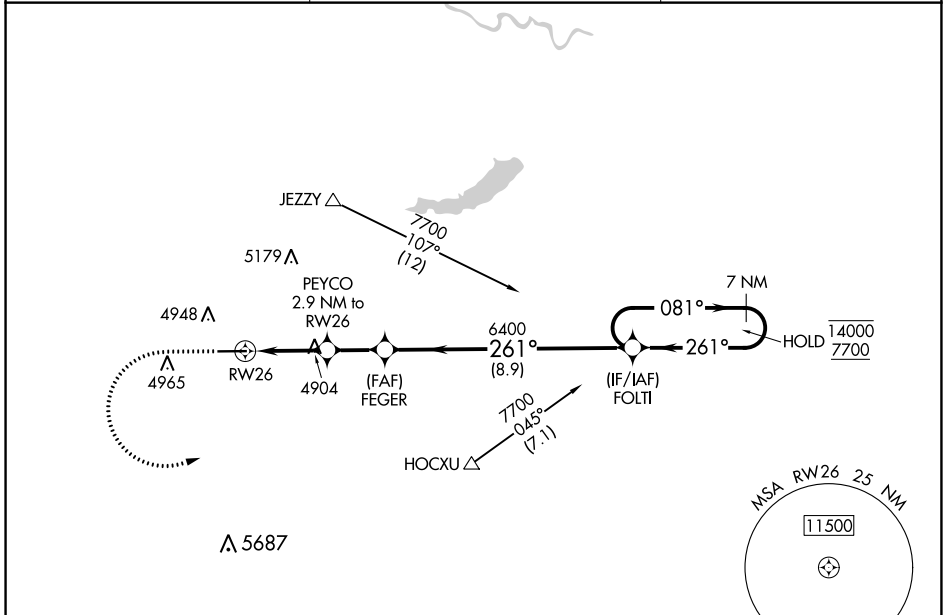
WAAS CH <b>61342</b> <b>W26A</b>	APP CRS <b>261°</b>	Rwy Idg TDZE Apt Elev	<b>5900</b> <b>4775</b> <b>4779</b>
--	------------------------	-----------------------------	---

# RNAV (GPS) RWY 26

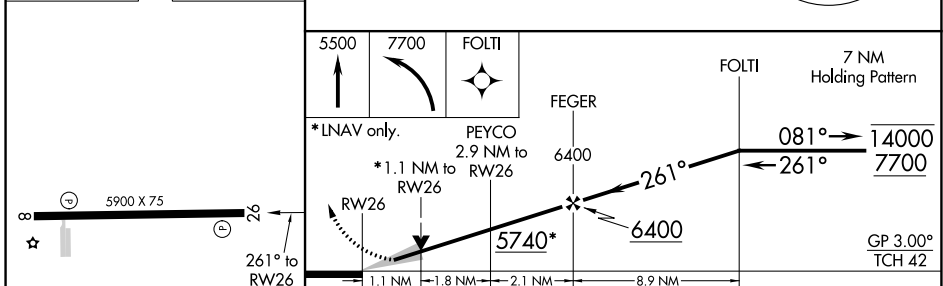
PHIFER AIRFIELD (E.A.N)

RNP APCH.	MISSED APPROACH: Climb to 5500 then climbing left turn to 7700 direct to FOLTI and hold.
<p>Circling Rwy 8 NA at night. For uncompensated Baro-VNAV systems, LNAV/VNAV NA below -24°C or above 54°C.</p>	

AWOS-3PT <b>121.125</b>	DENVER CENTER <b>135.6 363.025</b>	CTAF <b>122.9</b>
----------------------------	---------------------------------------	----------------------



ELEV <b>4779</b>	TDZE <b>4775</b>
------------------	------------------



CATEGORY	A	B	C	D
LPV DA	4975-1	200 (200-1)		NA
LNAV/VNAV DA	5025-1	250 (300-1)		NA
LNAV MDA	5160-1	385 (400-1)	5160-1½ 385 (400-1½)	NA
CIRCLING	5260-1 481 (500-1)	5280-1 501 (600-1)	5300-1½ 521 (600-1½)	NA

NW-1, 13 JUN 2024 to 11 JUL 2024

NW-1, 13 JUN 2024 to 11 JUL 2024