

|                           |                        |                         |
|---------------------------|------------------------|-------------------------|
| LOC I-BDH<br><b>109.5</b> | APP CRS<br><b>126°</b> | Rwy Idg<br><b>5500</b>  |
|                           |                        | TDZE<br><b>1124</b>     |
|                           |                        | Apt Elev<br><b>1126</b> |

# ILS or LOC RWY 13

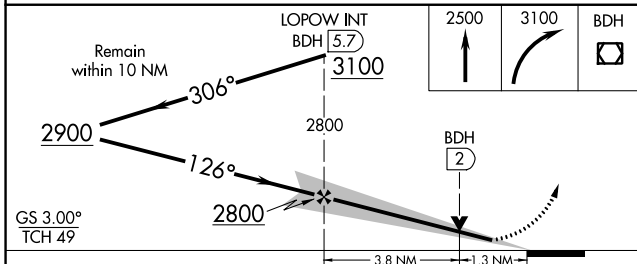
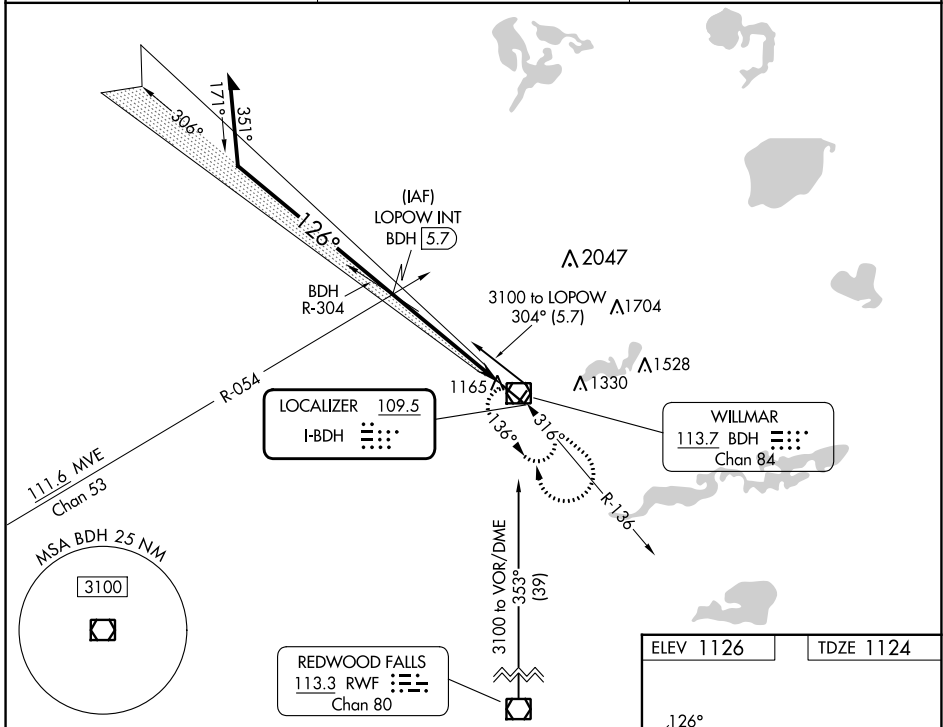
WILLMAR MUNI/JOHN L RICE FLD (BDH)

**NA** Circling NA to Rwys 3 and 21. When local altimeter setting not received, use Olivia altimeter setting; increase S-ILS 13 DA to 1379 feet; increase all MDAs 60 feet and Circling visibility Cat D ¼ SM. VDP NA when using Olivia Rgnl altimeter setting.

**MALSR**

**MISSED APPROACH:** Climb to 2500 then climbing right turn to 3100 direct BDH VOR/DME and hold, climb-in-hold to 3100.

|                           |  |                                 |
|---------------------------|--|---------------------------------|
| AWOS-3PT<br><b>118.75</b> | MINNEAPOLIS CENTER<br><b>125.5 323.1</b> | UNICOM<br><b>122.8 (CTAF) 0</b> |
|---------------------------|--|---------------------------------|



|                         |                          |
|-------------------------|--------------------------|
| ELEV 1126               | TDZE 1124                |
|                         |                          |
| HIRL Rwy 13-31 <b>0</b> |                          |
| REIL Rwy 31 <b>0</b>    |                          |
| FAF to MAP 5.1 NM       |                          |
| Knots                   | 60 90 120 150 180        |
| Min:Sec                 | 5:06 3:24 2:33 2:02 1:42 |

| CATEGORY | A                  | B                    | C                    | D |
|----------|--------------------|----------------------|----------------------|---|
| S-ILS 13 | 1324-¾ 200 (200-¾) |                      |                      |   |
| S-LOC 13 | 1600-¾ 476 (500-¾) | 1600-1 476 (500-1)   |                      |   |
| CIRCLING | 1600-1 474 (500-1) | 1660-1½ 534 (600-1½) | 1960-2¾ 834 (900-2¾) |   |

NC-1, 13 JUN 2024 to 11 JUL 2024

NC-1, 13 JUN 2024 to 11 JUL 2024