

WAAS CH <b>53312</b> <b>W02A</b>	APP CRS <b>023°</b>	Rwy Idg TDZE <b>1168</b> Apt Elev <b>1178</b>
----------------------------------------	------------------------	-----------------------------------------------------

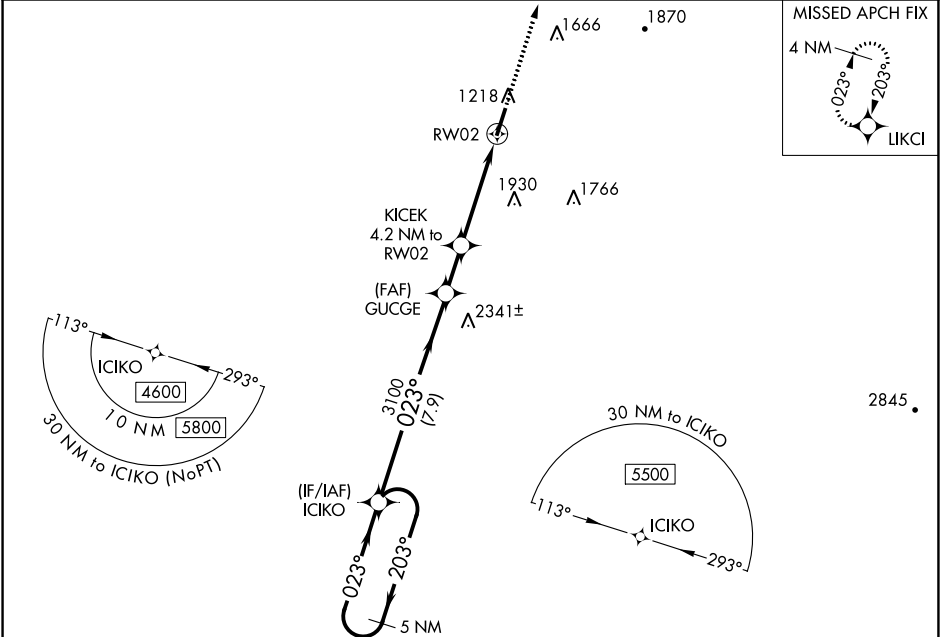
# RNAV (GPS) RWY 2

WILLIAMSBURG-WHITLEY COUNTY (BYL)

**NA** When local altimeter setting not received, use London altimeter setting and increase DA 48 feet, MDA 60 feet and LPV all Cats visibility 1/8 mile. DME/DME RNP-0.3 NA. Visibility reduction by helicopters NA. VDP NA with London altimeter setting.

**MISSED APPROACH:** Climb to 4000 direct LIKCI and hold.

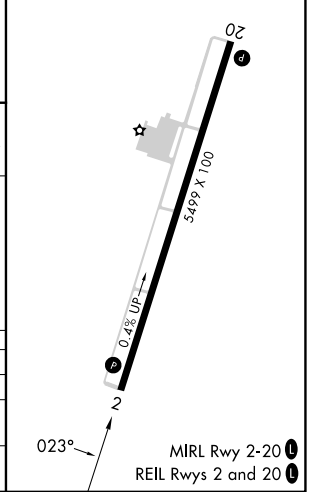
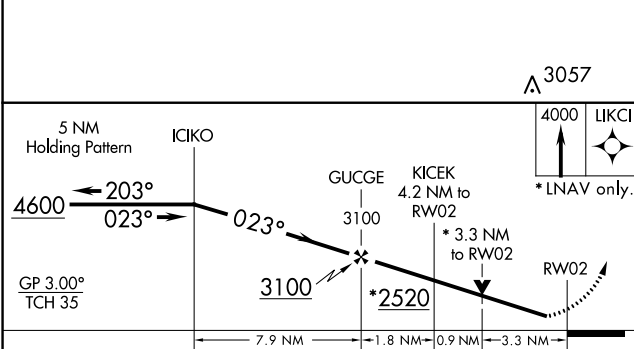
AWOS-3 <b>119.575</b>	INDIANAPOLIS CENTER <b>124.625 371.925</b>	UNICOM <b>122.7 (CTAF) 0</b>
--------------------------	-----------------------------------------------	---------------------------------



SE-1, 13 JUN 2024 to 11 JUL 2024

SE-1, 13 JUN 2024 to 11 JUL 2024

ELEV 1178	TDZE 1168
-----------	-----------



CATEGORY	A	B	C	D
LPV DA	1418 7/8		250 (300-7/8)	
RNAV MDA	2300-1 1/4 1132 (1200-1 1/4)	2300-1 1/2 1132 (1200-1 1/2)	2300-3	1132 (1200-3)
CIRCLING	2300-1 1/4 1122 (1200-1 1/4)	2300-1 1/2 1122 (1200-1 1/2)	2300-3	1122 (1200-3)