

WAAS CH <b>48814</b> <b>W09A</b>	APP CRS <b>091°</b>	Rwy Idg TDZE Apt Elev	<b>3401</b> <b>244</b> <b>244</b>
--	------------------------	-----------------------------	---

# RNAV (GPS) RWY 9

CHUATHBALUK (9A3) (PACH)

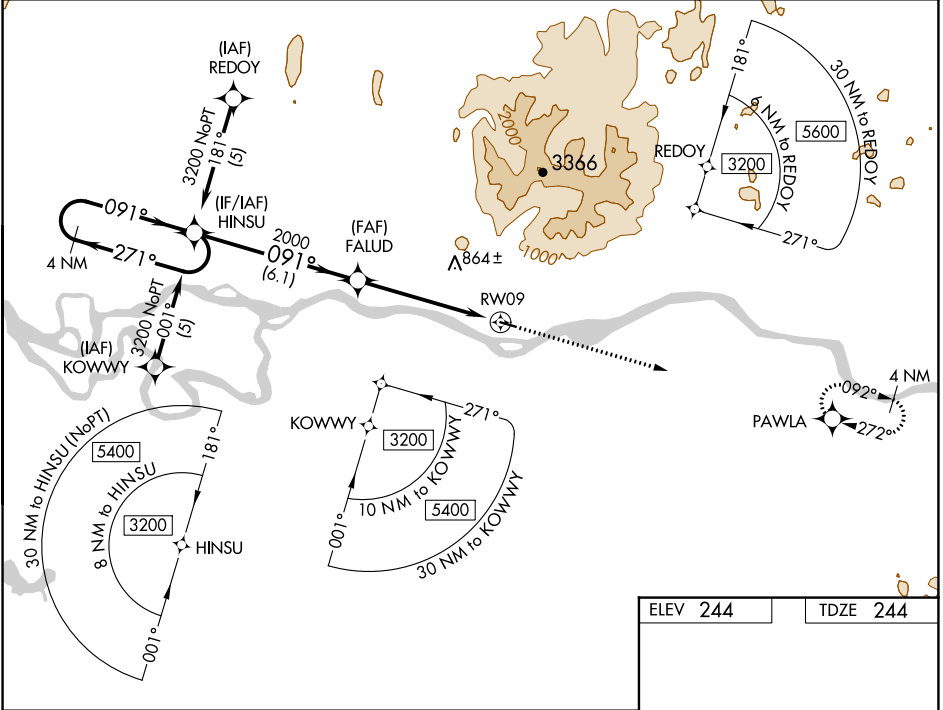
**⚠** NA  
**❄** -32°C

Circling NA north of Rwy 9-27. DME/DME RNP- 0.3 NA. Visibility reduction by helicopters NA. Use Aniak altimeter setting; when not received, use Kalskag altimeter setting and increase all DA 58 feet and MDA 60 feet and increase LPV all Cats visibility ¼ mile, and increase LNAV and circling Cat C visibility ¼ mile.

MISSED APPROACH: Climb to 3400 direct PAWLA and hold.

ANCHORAGE CENTER  
**118.15 251.05**

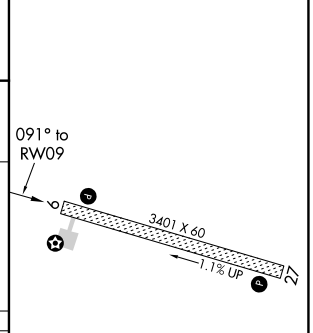
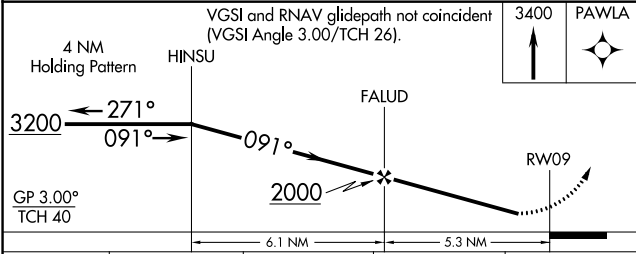
CTAF  
**122.9**



AK, 16 MAY 2024 to 11 JUL 2024

AK, 16 MAY 2024 to 11 JUL 2024

ELEV 244	TDZE 244
----------	----------



CATEGORY	A	B	C	D
LPV DA	652-1½ 408 (500-1½)			NA
LNAV MDA	1000-1 756 (800-1)	1000-1¼ 756 (800-1¼)	1000-2¼ 756 (800-2¼)	NA
CIRCLING	1000-1 756 (800-1)	1000-1¼ 756 (800-1¼)	1000-2¼ 756 (800-2¼)	NA

MIRL Rwy 9-27  
REIL Rws 9 and 27