

WAAS CH 82225 W31A	APP CRS 298°	Rwy Idg TDZE Apt Elev	3701 60 62
--	------------------------	-----------------------------	---------------------------------------

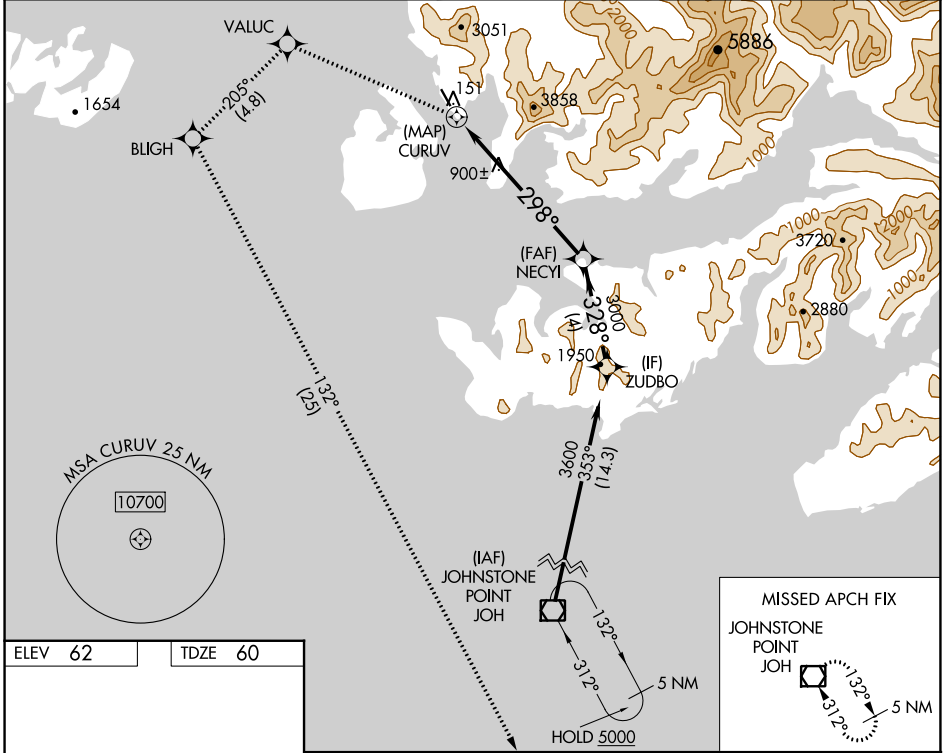
RNAV (GPS) RWY 31

TATITLEK (7KA) (PAKA)

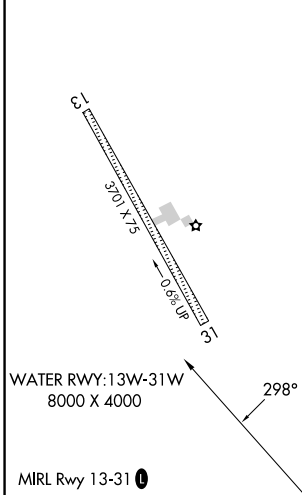
NA Use Valdez altimeter setting. Circling NA northeast of Rwy 31-13. DME/DME RNP-0.3 NA. Helicopter visibility reduction below 1 SM NA. Procedure NA at night.

MISSED APPROACH: Climbing left turn to 4400 direct VALUC and on track 205° to BLIGH and on track 132° to JOH VOR/DME and hold.

ANCHORAGE CENTER 119.3	JUNEAU RADIO 122.2	CTAF 122.7
----------------------------------	------------------------------	----------------------



ELEV 62	TDZE 60
---------	---------



4400	VALUC	tr 205°	BLIGH	tr 132°	JOH	NECYI	ZUDBO
						3600	3600
	CURUV					3000	

CATEGORY	A	B	C	D
LP MDA	1260-1¼ 1200 (1200-1¼)	1260-1½ 1200 (1200-1½)		NA
LNAV MDA	1400-1¼ 1340 (1400-1¼)	1400-1½ 1340 (1400-1½)		NA
CIRCLING	1400-1¼ 1338 (1400-1¼)	1400-1½ 1338 (1400-1½)		NA

AK, 16 MAY 2024 to 11 JUL 2024

AK, 16 MAY 2024 to 11 JUL 2024