

WAAS CH <b>48927</b> <b>W07A</b>	APP CRS <b>067°</b>	Rwy ldg <b>5500</b> TDZE <b>585</b> Apt Elev <b>595</b>
--	------------------------	---

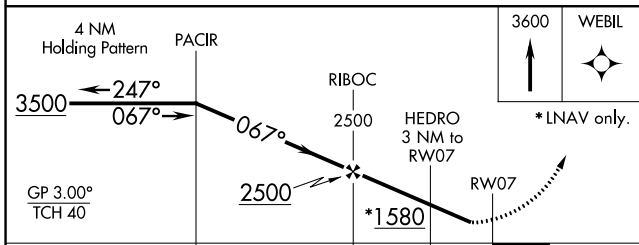
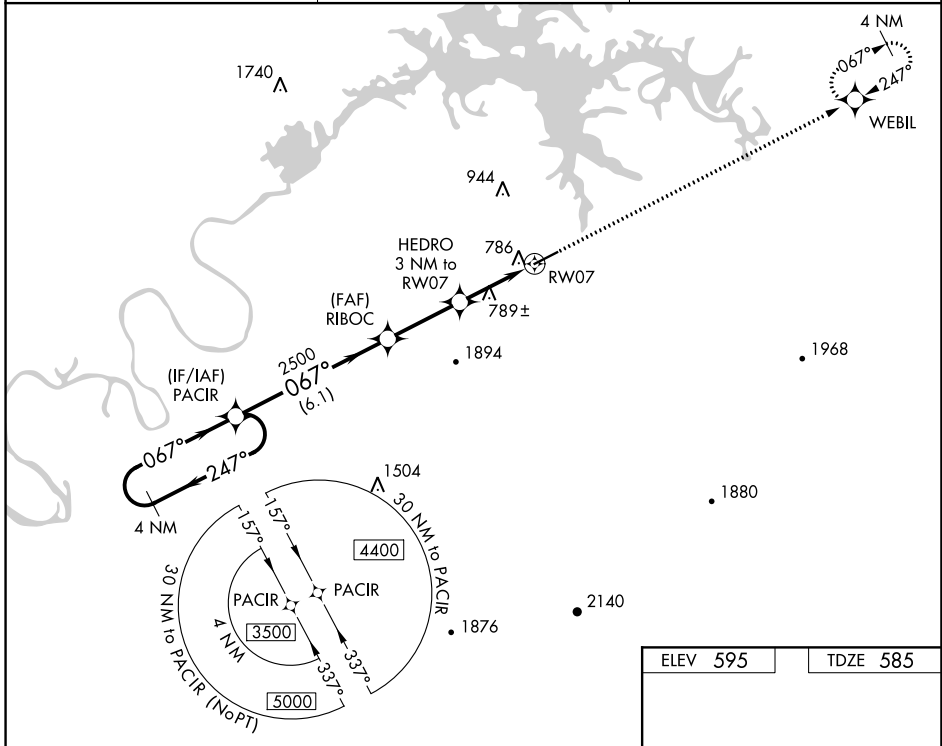
# RNAV (GPS) RWY 7

CENTRE-PIEDMONT CHEROKEE COUNTY RGNL (PYP)

**NA** Baro-VNAV NA, DME/DME RNP-0.3 NA. Helicopter visibility reduction below  $\frac{3}{4}$  SM NA. Use Gadsden altimeter setting; when not received use Anniston altimeter setting and increase all DA/MDA 20 feet; increase LPV all Cats and LNAV Cats C/D visibility  $\frac{1}{8}$  mile.

**MISSED APPROACH:** Climb to 3600 direct WEBIL and hold.

GAD AWOS-3PT <b>127.825</b>	ATLANTA CENTER <b>124.5 270.325</b>	CTAF <b>122.90</b>
--------------------------------	--	-----------------------



ELEV 595	TDZE 585
----------	----------

CATEGORY	A	B	C	D
LPV DA		896-1	311 (400-1)	
LNAV/VNAV DA		1009-1½	424 (500-1½)	
LNAV MDA	1100-1	515 (600-1)	1100-1⅓	515 (600-1⅓)
CIRCLING	1180-1	585 (600-1)	1360-2¼ 765 (800-2¼)	2260-3 1665 (1700-3)

MIRL Rwy 7-25

SE-4, 13 JUN 2024 to 11 JUL 2024

SE-4, 13 JUN 2024 to 11 JUL 2024