

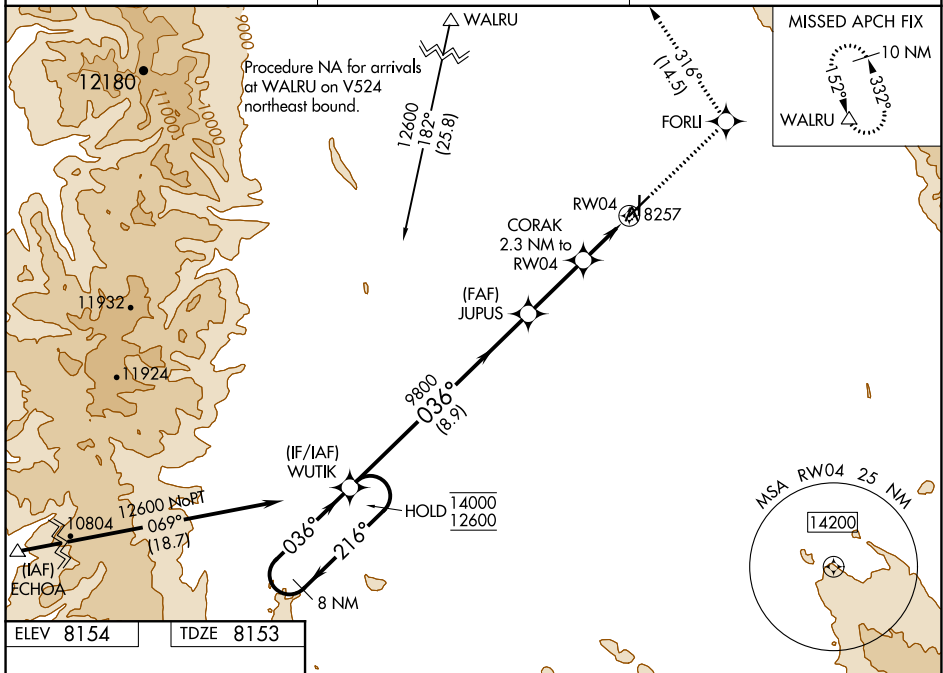
WAAS CH 78442 W04A	APP CRS 036°	Rwy Idg 5900 TDZE 8153 Apt Elev 8154
---------------------------------	------------------------	---

RNAV (GPS) RWY 4

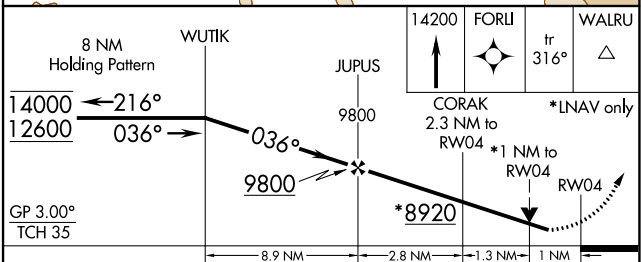
WALDEN-JACKSON COUNTY (33V)

RNP APCH.	MISSED APPROACH: (Do not exceed 200K until FORLI) Climb to 14200 direct FORLI and track 316° to WALRU and hold, continue climb-in-hold to 14200.
<p>▼ Circling NA to Rwy 17 and 35. Circling NA southeast of Rwy 4-22. Rwy 4 helicopter visibility reduction below 3/4 SM NA. For uncompensated Baro-VNAV systems, LNAV/VNAV NA below -31°C or above 54°C.</p>	

AWOS-3 118.625	DENVER CENTER 126.5 371.85	CTAF 122.9 0
--------------------------	--------------------------------------	------------------------



ELEV 8154	TDZE 8153
-----------	-----------



CATEGORY	A	B	C	D
LPV DA	8403-1	250 (300-1)		NA
LNAV/VNAV DA	8407-1	254 (300-1)		NA
LNAV MDA	8520-1	367 (400-1)		NA
C CIRCLING	8520-1 366 (400-1)	8620-1 466 (500-1)	8820-1 3/4 666 (700-1 3/4)	NA

SW-1, 13 JUN 2024 to 11 JUL 2024

SW-1, 13 JUN 2024 to 11 JUL 2024