

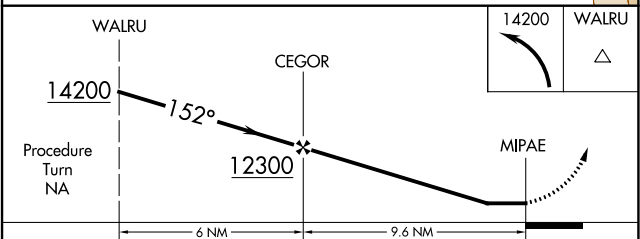
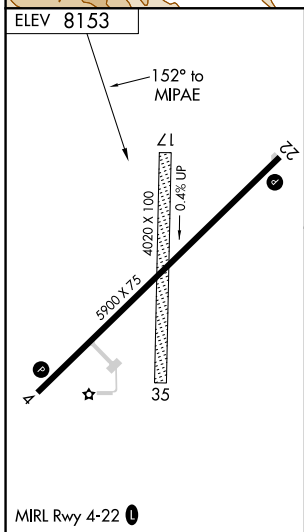
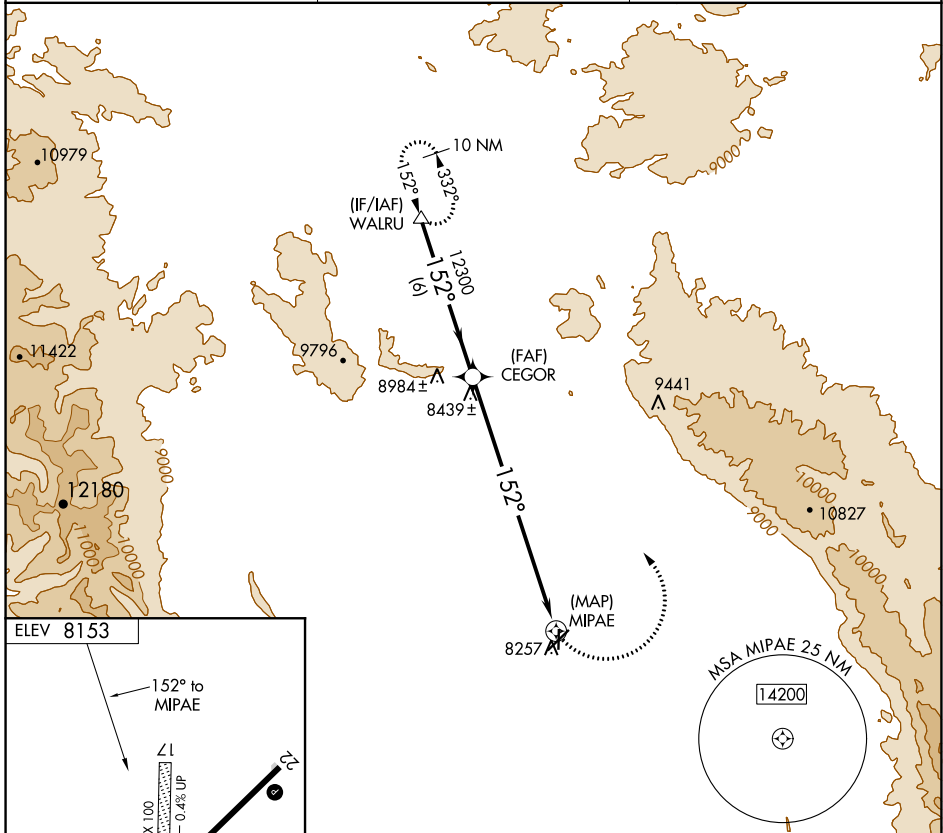
APP CRS <b>152°</b>	Rwy Idg TDZE Apt Elev	<b>N/A</b> <b>N/A</b> <b>8153</b>
------------------------	-----------------------------	---

# RNAV (GPS)-A

WALDEN-JACKSON COUNTY (33V)

<p><b>▽</b> When local altimeter setting not received, procedure NA. Circling NA southeast of Rwy 4-22. Circling to Rwy 17 and 35 NA. DME/DME RNP-0.3 NA.</p>	<p><b>MISSED APPROACH:</b> Climbing left turn to 14200 direct WALRU and hold, continue climb-in-hold to 14200.</p>
---	--

AWOS-3 <b>118.625</b>	DENVER CENTER <b>126.5 371.85</b>	CTAF <b>122.9</b>
--------------------------	--------------------------------------	----------------------



CATEGORY	A	B	C	D
CIRCLING	8880-1	727 (800-1)	8880-2 727 (800-2)	NA

SW-1, 13 JUN 2024 to 11 JUL 2024

SW-1, 13 JUN 2024 to 11 JUL 2024