

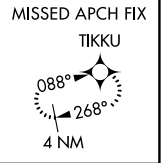
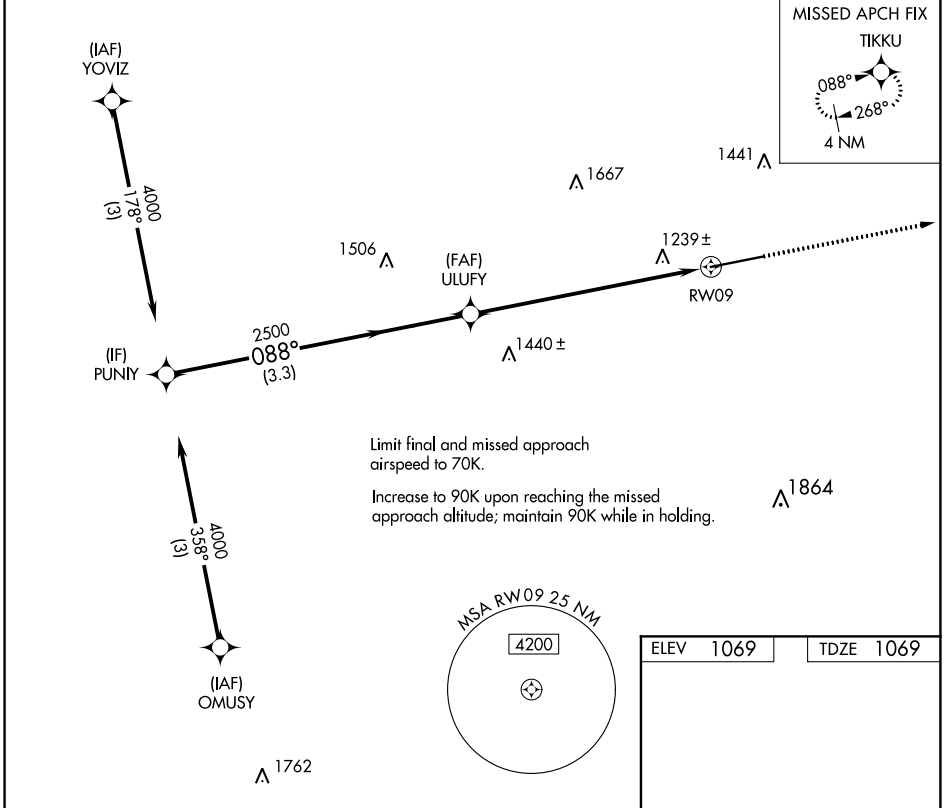
WAAS CH <b>50241</b> <b>W09B</b>	APP CRS <b>088°</b>	Rwy Idg TDZE Apt Elev	<b>3500</b> <b>1069</b> <b>1069</b>
--	------------------------	-----------------------------	---

# COPTER RNAV (GPS) Y RWY 9

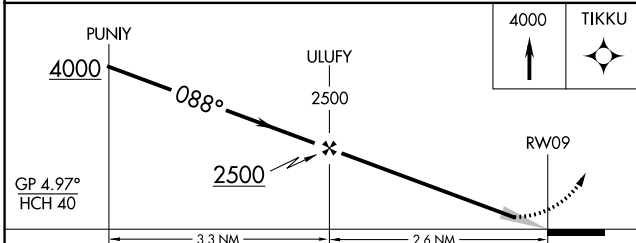
GREENE COUNTY (WAY)

RNP APCH.		MISSED APPROACH: Climb to 4000 direct TIKKU and hold, continue climb-in-hold to 4000.
▼ ▲ NA	Use Washington altimeter setting.	

AFJ AWOS-3PT <b>119.175</b>	CLARKSBURG APP CON★ <b>121.15 284.65</b>	UNICOM <b>122.8 (CTAF) 0</b>
--------------------------------	---	---------------------------------



ELEV 1069	TDZE 1069
-----------	-----------



CATEGORY	COPTER	
LPV DA	1493-1¼	424 (500-1¼)
LNAV MDA	1560-1	491 (500-1)

NE-4, 13 JUN 2024 to 11 JUL 2024

NE-4, 13 JUN 2024 to 11 JUL 2024