

WAAS CH 78209 W20A	APP CRS 206°	Rwy Idg TDZE Apt Elev	5500 1020 1028
--	------------------------	-----------------------------	---

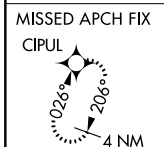
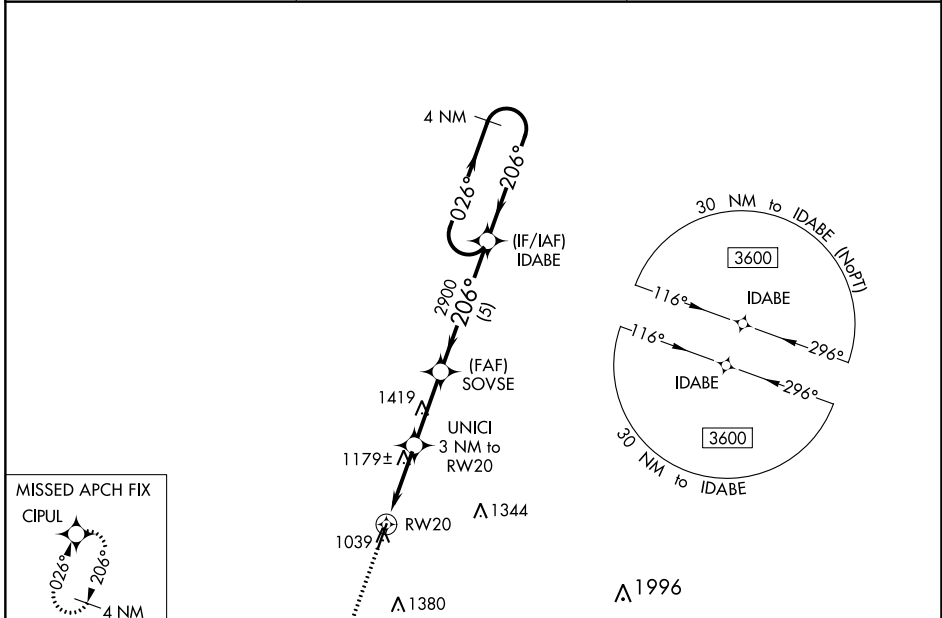
RNAV (GPS) RWY 20

MOREHEAD-ROWAN COUNTY CLYDE A THOMAS RGNL (SYM)

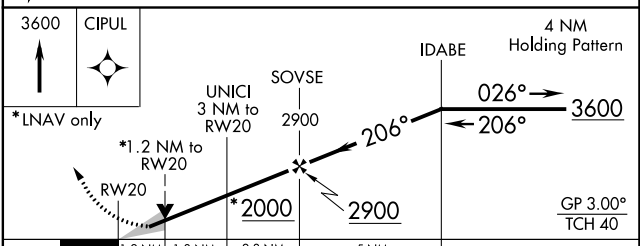
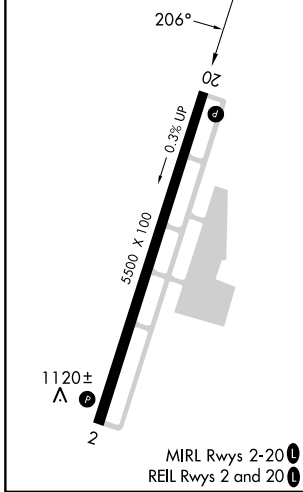
⚠ For uncompensated Baro-VNAV systems, LNAV/VNAV NA below -17°C (2°F) or above 54°C (130°F). DME/DME RNP-0.3 NA. Baro-VNAV and VDP NA when using Mount Sterling altimeter setting. When local altimeter setting not received, use Mount Sterling altimeter setting: increase all DA 50 feet and all MDA 60 feet; increase LPV and LNAV/VNAV all Cats visibility 1/8 mile, LNAV Cats C/D visibility 1/8 mile, and Circling Cats C/D visibility 1/4 mile.

MISSED APPROACH:
Climb to 3600 direct CIPUL and hold.

AWOS-3 119.95	INDIANAPOLIS CENTER 124.225 360.725	UNICOM 122.7 (CTAF) 0
-------------------------	---	---------------------------------



ELEV 1028	TDZE 1020
-----------	-----------



CATEGORY	A	B	C	D
LPV DA		1270-7/8	250 (300-7/8)	
LNAV/VNAV DA		1453-1 1/2	433 (500-1 1/2)	
LNAV MDA	1440-1	420 (500-1)	1440-1 1/4	420 (500-1 1/4)
CIRCLING	1520-1	492 (500-1)	1760-2 732 (800-2)	1820-2 1/2 792 (700-2 1/2)

SE-1, 13 JUN 2024 to 11 JUL 2024

SE-1, 13 JUN 2024 to 11 JUL 2024