

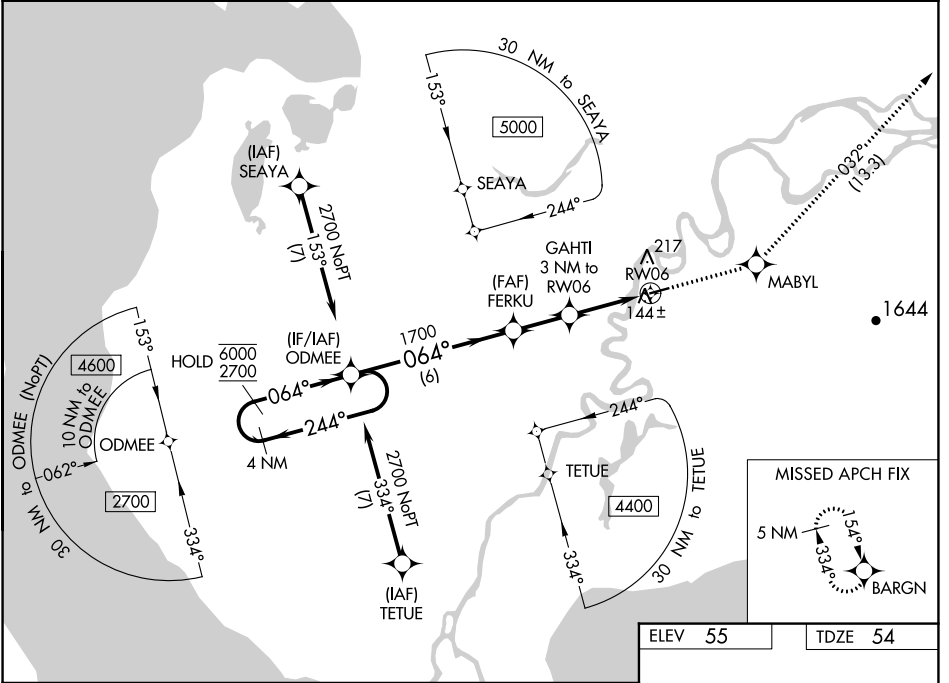
WAAS CH 78213 W06A	APP CRS 064°	Rwy Idg 4000 TDZE 54 Apt Elev 55
--	------------------------	---

RNAV (GPS) RWY 6

ROBERT/BOB/CURTIS MEML (D76) (PFNO)

RNP APCH.	MISSED APPROACH: Climb to 4400 direct MABYL and on track 032° to BARGN and hold, continue climb-in-hold to 4400.
<p>▼ Rwy 6 helicopter visibility reduction below 3/4 SM NA.</p> <p>▲ For uncompensated Baro-VNAV systems, LNAV/VNAV NA below -22°C or above 54°C.</p> <p>☒ -23°C</p>	

AWOS-3P 120.0	ANCHORAGE CENTER 119.2 263.0	CTAF 122.7 0
-------------------------	--	------------------------



AK, 16 MAY 2024 to 11 JUL 2024

AK, 16 MAY 2024 to 11 JUL 2024

VGSIs and RNAV glidepath not coincident (VGSIs Angle 3.00/TCH 25).		4400	MABYL	tr 032°	BARGN
4 NM Holding Pattern		↑	✧		✧
6000 ← 244°	ODMEE	FERKU	GAHTI	*LNAV only	
2700 → 064°		1700	3 NM to RW06		
GP 3.00°			*1.2 NM to RW06		
TCH 40			RW06		
	6 NM	2.1 NM	1.8 NM	1.2 NM	
CATEGORY	A	B	C	D	
LPV DA	304-1		250 (300-1)		
LNAV/VNAV DA	355-1		301 (300-1)		
LNAV MDA	460-1	406 (500-1)	460-1 1/8	406 (500-1 1/8)	
CIRCLING	520-1	465 (500-1)	520-1 1/2	760-2 1/4	705 (800-2 1/4)

ELEV 55	TDZE 54
---------	---------

