

WAAS CH <b>99538</b> <b>W34A</b>	APP CRS <b>327°</b>	Rwy Idg TDZE Apt Elev	<b>2901</b> <b>35</b> <b>35</b>
--	------------------------	-----------------------------	---------------------------------------

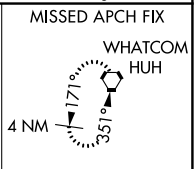
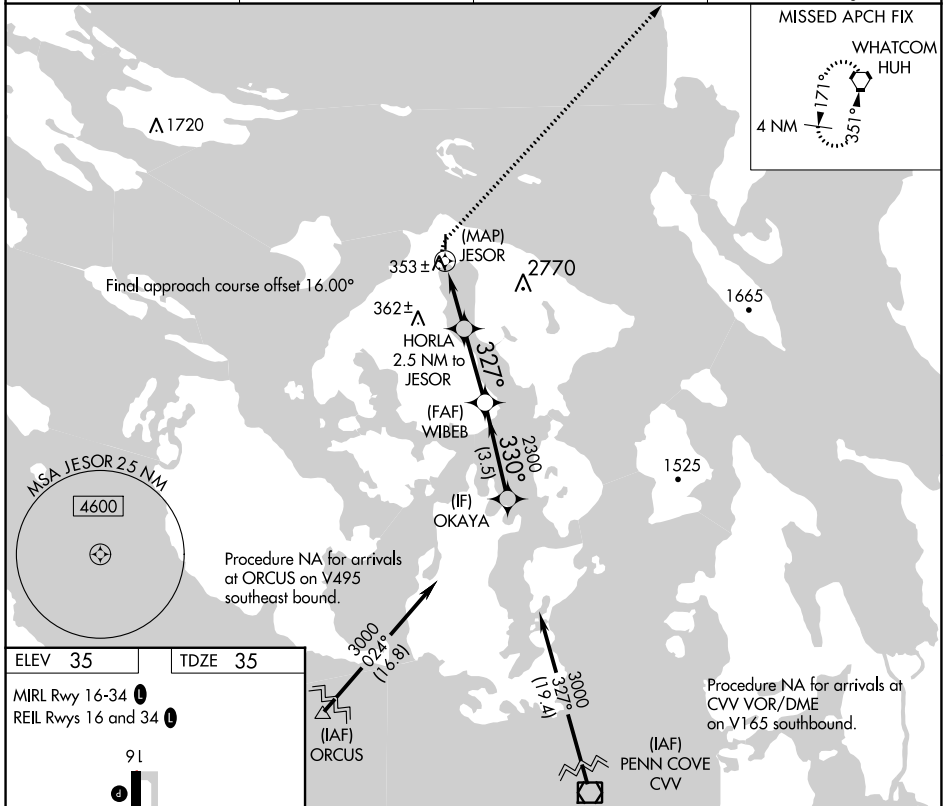
# RNAV (GPS) RWY 34

ORCAS ISLAND (ORS)

**⚠** DME/DME RNP-0.3 NA. Helicopter visibility reduction below 1 SM NA.  
**⚠** WAAS required, if unable see RNAV GPS-A. When local altimeter setting not received, use Friday Harbor altimeter setting and increase all MDA 40 feet and LP Cat B visibility ¼ mile. Night landing: Rwy 34 NA.

MISSED APPROACH: Climbing right turn to 2000 direct HUH VORTAC and hold.

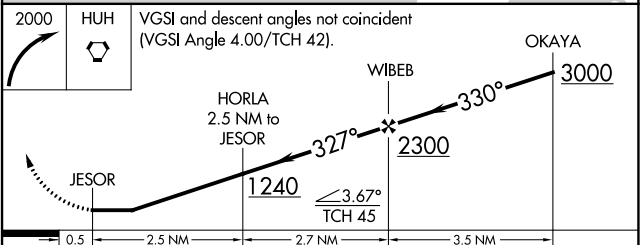
AWOS-3 <b>135.425</b>	WHIDBEY APP CON <b>118.2 285.65</b> (SOUTH)	VICTORIA APP CON <b>132.7 290.8</b> (NORTH)	CTAF <b>128.250</b>
--------------------------	--	--	------------------------



ELEV 35	TDZE 35
MIRL Rwy 16-34	REIL Rwys 16 and 34

Procedure NA for arrivals at ORCUS on V495 southeast bound.

Procedure NA for arrivals at CVV VOR/DME on V165 southbound.



2000	HUH	VGSi and descent angles not coincident (VGSi Angle 4.00/TCH 42).		
CATEGORY	A	B	C	D
LP MDA	760-1	725 (800-1)	NA	
CIRCLING	1120-1¼ 1085 (1100-1¼)	1820-1½ 1785 (1800-1½)	NA	

NW-1, 13 JUN 2024 to 11 JUL 2024

NW-1, 13 JUN 2024 to 11 JUL 2024