

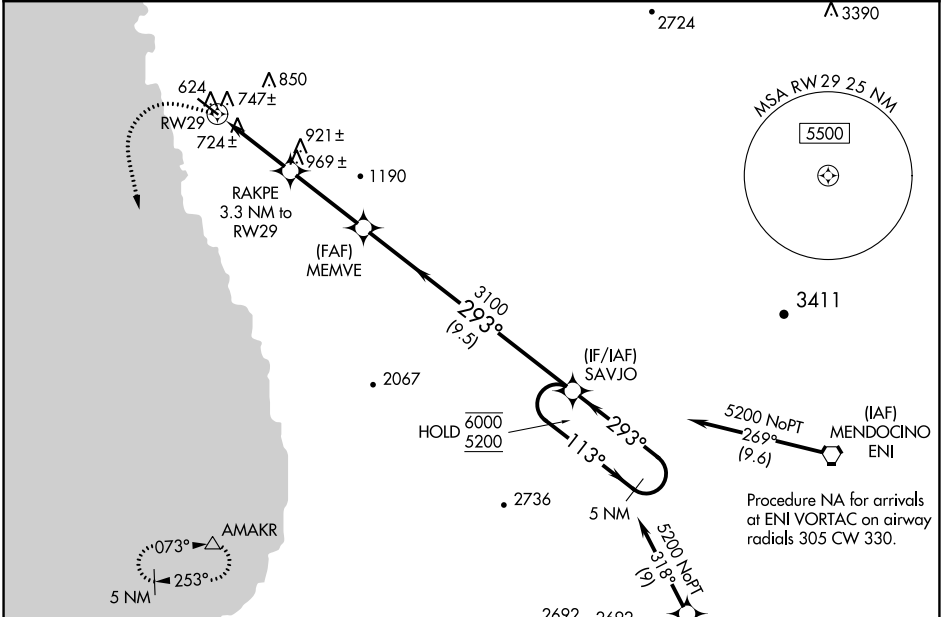
WAAS CH 77829 W29A	APP CRS 293°	Rwy Idg TDZE Apt Elev	5249 574 574
--	------------------------	-----------------------------	---

RNAV (GPS) RWY 29

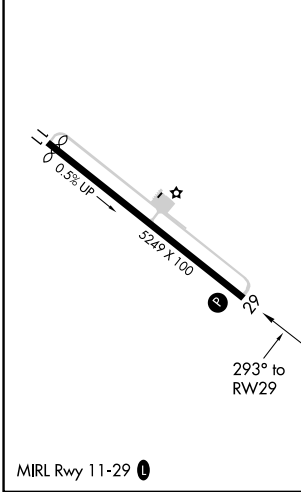
LITTLE RIVER (LLR)

RNP APCH.	MISSED APPROACH: Climbing left turn to 6000 direct AMAKR and hold, continue climb-in-hold to 6000.
<p>▼ Circling NA northeast of Rwy 11-29.</p> <p>▲ Procedure NA at night.</p> <p>▲ Rwy 29 helicopter visibility reduction below 1 SM NA.</p>	

AWOS-AV 121.125	OAKLAND CENTER 132.2 350.3	AUNICOM 122.7 (CTAF) 0
---------------------------	--------------------------------------	----------------------------------



ELEV 574	TDZE 574
----------	----------



6000 AMAKR		VGSI and descent angles not coincident (VGSI Angle 3.50/TCH 42).		5 NM SAVJO Holding Pattern	
RWY 29		RAKPE 3.3 NM to RWY 29		MEMVE	
		3.50° TCH 55		3100	
		1860		113° → 6000	
		← 293° 5200			
		3.3 NM		3.3 NM	
				9.5 NM	
CATEGORY		A	B	C	D
LP MDA		980-1	406 (500-1)	980-1½	406 (500-1½)
LNAV MDA		1000-1	426 (500-1)	1000-1¼	426 (500-1¼)
CIRCLING		1040-1	466 (500-1)	1080-1½ 506 (600-1½)	1400-2¾ 826 (900-2¾)

SW-2, 13 JUN 2024 to 11 JUL 2024

SW-2, 13 JUN 2024 to 11 JUL 2024