

LISBON, NORTH DAKOTA

AL-10400 (FAA)

23138

WAAS CH 93939 W32A	APP CRS 326°	Rwy Idg TDZE Apt Elev	3397 1232 1240
--	------------------------	-----------------------------	---

RNAV (GPS) RWY 32

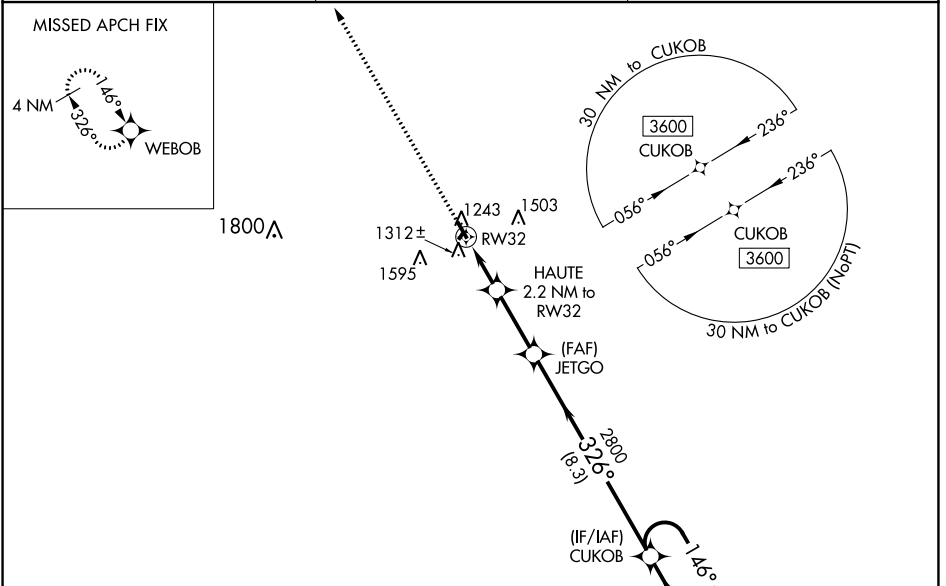
LISBON MUNI (6L3)

RNP APCH - GPS.

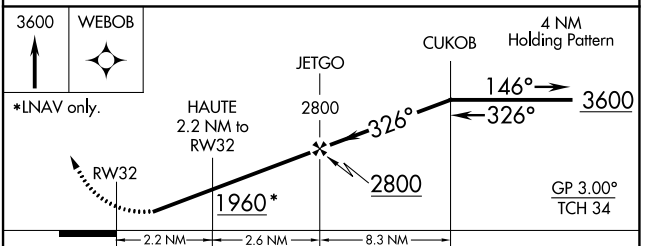
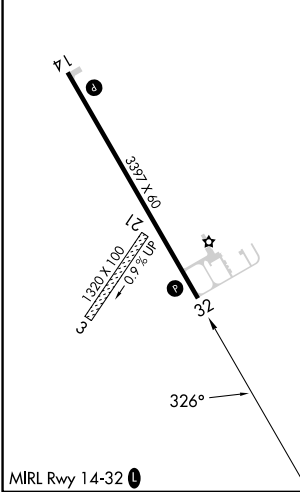
▼ Circling NA to Rws 3 and 21. Baro-VNAV NA. Circling Rwy 14 NA at night.
 ▲ NA Rwy 32 helicopter visibility reduction below ¼ SM NA. Use Gwinner altimeter setting; when not received, use Valley City altimeter setting and increase LPV DA to 1580 feet; increase LNAV/VNAV DA to 1619 feet and all visibilities ½ SM. Increase all MDAs 80 feet.

MISSED APPROACH: Climb to 3600 direct WEBOB and hold.

GWR AWOS-3 118.325	MINNEAPOLIS CENTER 127.35 278.3	CTAF 122.9
------------------------------	---	----------------------



ELEV 1240	TDZE 1232
-----------	-----------



CATEGORY	A	B	C	D
LPV DA	1519-1	287 (300-1)		NA
LNAV/VNAV DA	1558-1	326 (400-1)		NA
LNAV MDA	1660-1	428 (500-1)		NA
<input checked="" type="checkbox"/> CIRCLING	1740-1 500 (500-1)	1940-1 700 (700-1)		NA

LISBON, NORTH DAKOTA
 Orig-A 18MAY23

46°27'N-97°44'W

RNAV (GPS) RWY 32

NC-1, 13 JUN 2024 to 11 JUL 2024

NC-1, 13 JUN 2024 to 11 JUL 2024