

WAAS CH <b>50538</b> <b>W16A</b>	APP CRS <b>164°</b>	Rwy ldg <b>3400</b> TDZE <b>1162</b> Apt Elev <b>1162</b>
--	------------------------	---

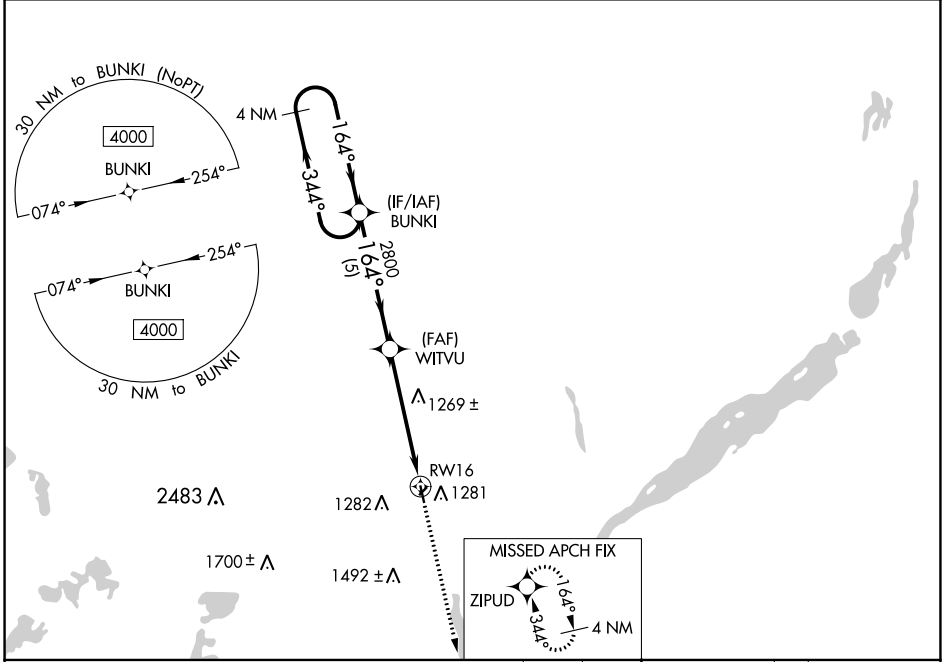
# RNAV (GPS) RWY 16

SISSETON MUNI (8D3)

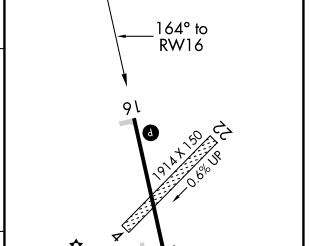
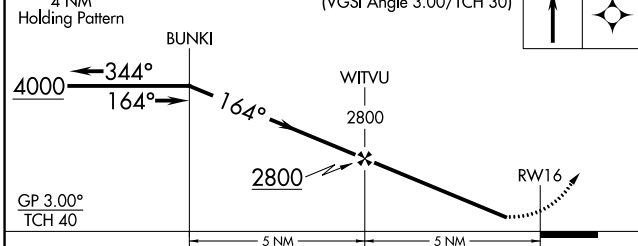
**▼** Circling NA to Rwys 4 and 22. Baro-VNAV NA. DME/DME RNP-0.3 NA. Helicopter visibility reduction below 3/4 SM NA. **▲** NA use Ortonville altimeter setting and increase LPV DA to 1496 feet, LNAV/VNAV DA to 1516 feet and all MDA 20 feet. Increase LNAV/VNAV Cats A/B visibility 1/8 mile.

**MISSED APPROACH:** Climb to 4000 direct ZIPUD and hold, continue climb-in-hold to 4000.

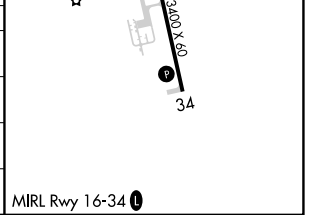
ETH AWOS-3 <b>118.775</b>	MINNEAPOLIS CENTER <b>128.5 306.2</b>	CTAF <b>122.90</b>
------------------------------	--	-----------------------



4 NM Holding Pattern	VGSI and RNAV glidepath not coincident (VGSI Angle 3.00/TCH 30)	4000 ZIPUD	ELEV 1162	TDZE 1162
----------------------	---	------------	-----------	-----------



CATEGORY	A	B	C	D
LPV DA	1478-1 1/8	316 (400-1 1/8)		NA
LNAV/VNAV DA	1498-1 1/8	336 (400-1 1/8)		NA
LNAV MDA	1600-1	438 (500-1)		NA
<b>C</b> CIRCLING	1660-1 498 (500-1)	1700-1 538 (600-1)		NA



NC-1, 13 JUN 2024 to 11 JUL 2024

NC-1, 13 JUN 2024 to 11 JUL 2024