

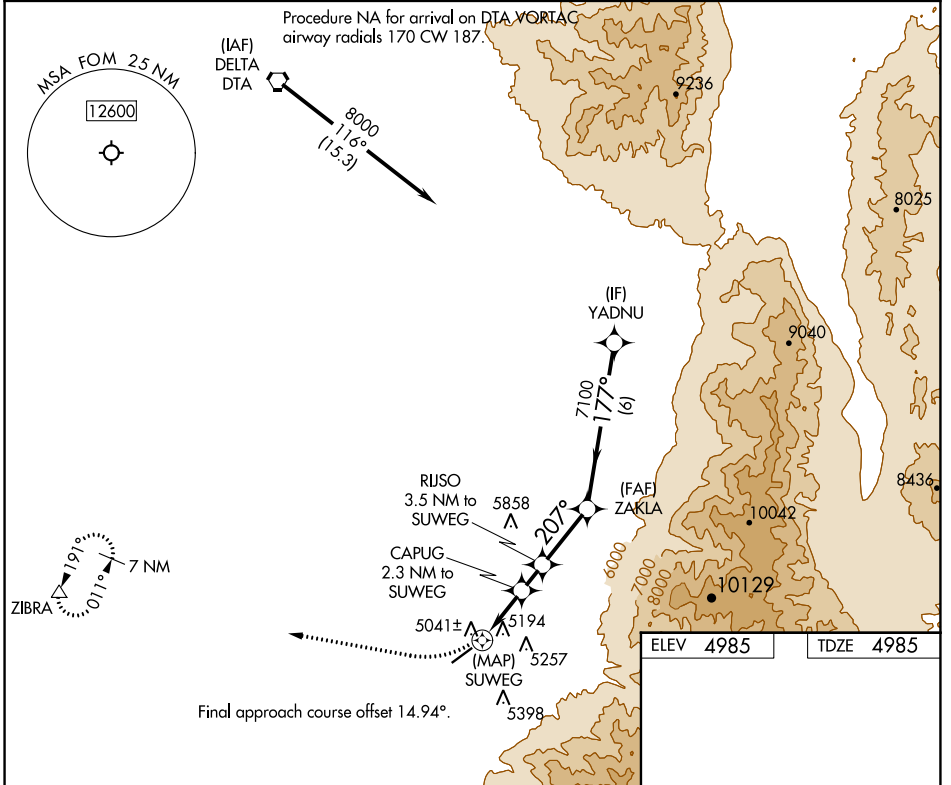
APP CRS	Rwy Idg	<b>5040</b>
<b>207°</b>	TDZE	<b>4985</b>
	Apt Elev	<b>4985</b>

# RNAV (GPS) RWY 22

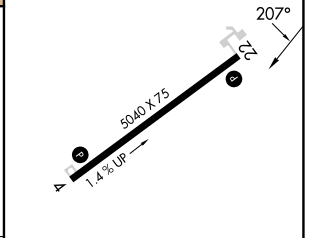
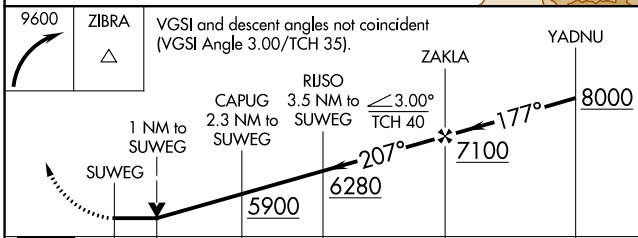
FILLMORE MUNI (FOM)

RNP APCH.	MISSED APPROACH: Climbing right turn to 9600 direct ZIBRA and hold, continue climb-in-hold to 9600.
	Rwy 22 helicopter visibility reduction below 3/4 SM NA.

AWOS-3 <b>133.775</b>	SALT LAKE CITY CENTER <b>125.575 379.275</b>	UNICOM <b>122.8 (CTAF) 0</b>
--------------------------	---	---------------------------------



ELEV 4985	TDZE 4985
-----------	-----------



CATEGORY	A	B	C	D
LNVA MDA	5500-1	515 (600-1)	5500-1 5/8 515 (600-1 5/8)	NA
CIRCLING	5620-1	635 (700-1)	6200-3 1215 (1300-3)	NA

REIL Rwys 4 and 22 0  
MRL Rwy 4-22 0

SW-4, 13 JUN 2024 to 11 JUL 2024

SW-4, 13 JUN 2024 to 11 JUL 2024