

WAAS CH 42734 W10A	APP CRS 099°	Rwy Idg TDZE Apt Elev	5000 182 185
--	------------------------	-----------------------------	---

RNAV (GPS) RWY 10

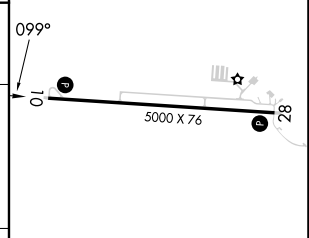
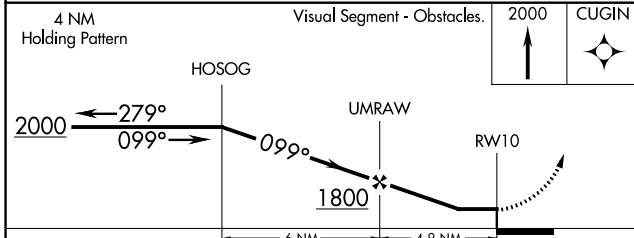
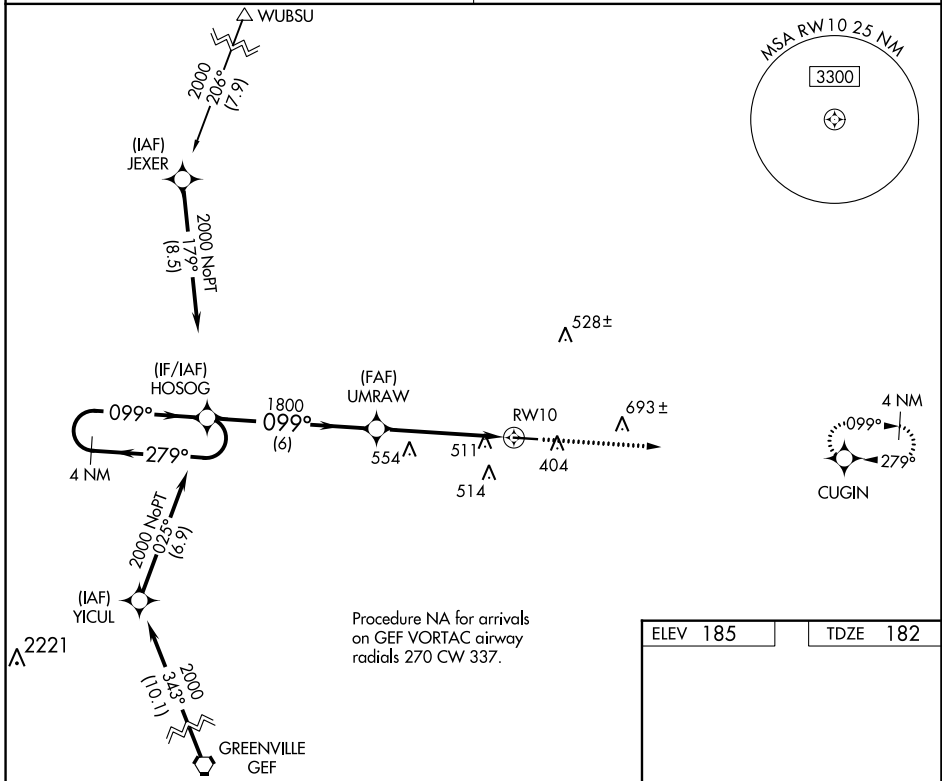
QUITMAN BROOKS COUNTY (4J5)

RNP APCH.

▼ Procedure NA at night. Rwy 10 helicopter visibility reduction below 1 SM NA.
 ▲ NA Use Valdosta altimeter setting; when not received, use Thomasville altimeter setting and increase all MDA 20 feet; increase LP Cat C visibility 1/8 SM.

MISSED APPROACH: Climb to 2000 direct CUGIN and hold.

VALDOSTA APP CON* 126.6	CTAF 122.9
-----------------------------------	----------------------



CATEGORY	A	B	C	D
LP MDA	740-1	558 (600-1)	740-1 5/8 558 (600-1 5/8)	NA
LNAV MDA	820-1	638 (700-1)	820-1 7/8 638 (700-1 7/8)	NA

MIRL Rwy 10-28

SE-4, 13 JUN 2024 to 11 JUL 2024

SE-4, 13 JUN 2024 to 11 JUL 2024