

# RNAV (GPS) RWY 26

SOUTHERN WEST VIRGINIA RGNL (E,B,D)

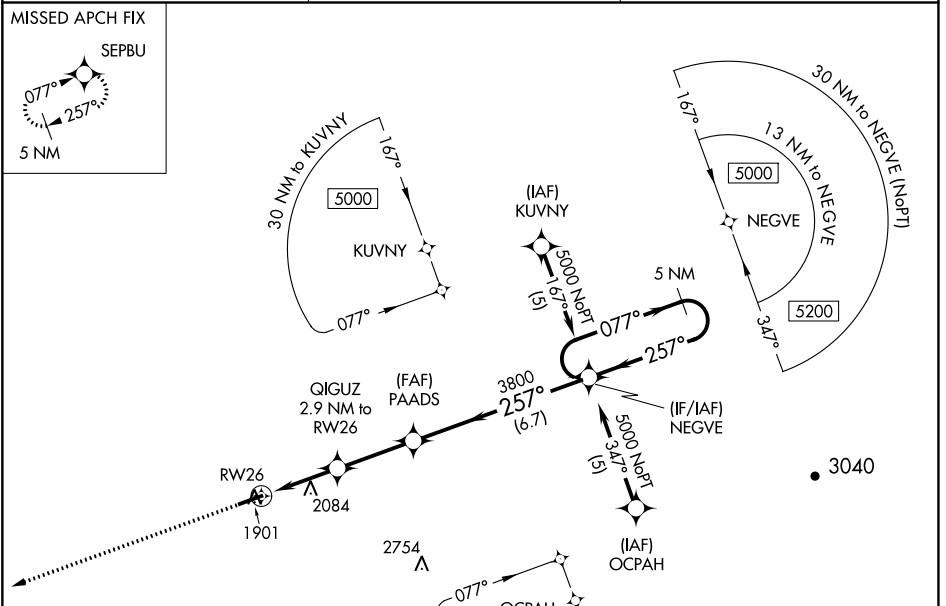
APP CRS <b>257°</b>	Rwy Idg <b>5001</b>
	TDZE <b>1883</b>
	Apt Elev <b>1883</b>

RNP APCH - GPS.

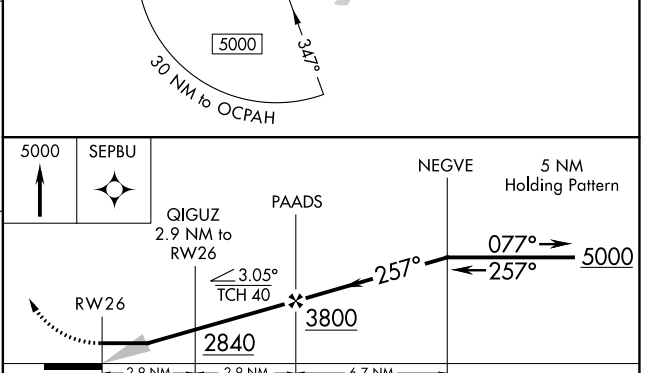
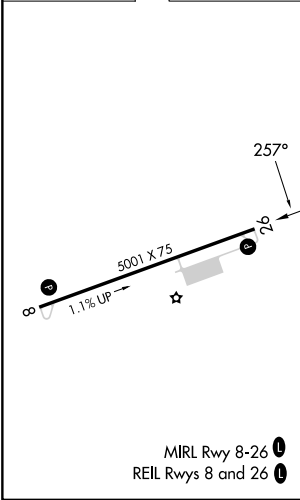
▼ Obtain local altimeter setting on CTAF; when not received, use Beckley altimeter setting; increase all MDAs 140 feet and visibility LNAV Cat A and Circling Cat A/B ¼ SM and Circling Cat C ½ SM.

▲ NA MISSED APPROACH: Climb to 5000 direct SEPBU and hold.

116 AWOS-3 <b>120.625</b>	INDIANAPOLIS CENTER <b>126.575 257.85</b>	UNICOM <b>122.8 (CTAF) 0</b>
------------------------------	--	---------------------------------



ELEV <b>1883</b>	TDZE <b>1883</b>
------------------	------------------



CATEGORY	A	B	C	D
LNAV MDA	2660-1 777 (800-1)	2660-1¼ 777 (800-1¼)	2660-2½	777 (800-2½)
CIRCLING	2680-1	797 (800-1)	2760-2½ 877 (900-2½)	2900-3 1017 (1100-3)

NE-4, 13 JUN 2024 to 11 JUL 2024

NE-4, 13 JUN 2024 to 11 JUL 2024