

|  |                        |                             |   |
|--|------------------------|-----------------------------|---|
| WAAS<br>CH <b>93944</b><br><b>W28A</b> | APP CRS<br><b>277°</b> | Rwy Idg<br>TDZE<br>Apt Elev | <b>3499</b><br><b>777</b><br><b>777</b> |
|--|------------------------|-----------------------------|---|

# RNAV (GPS) RWY 28

SANDUSKY CITY (Y83)

RNP APCH - GPS.

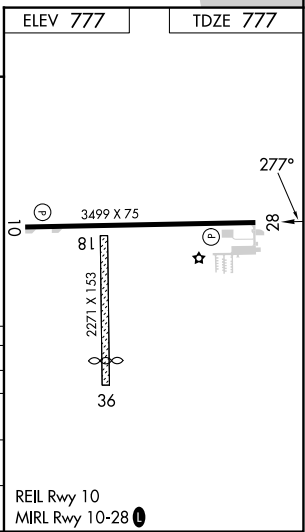
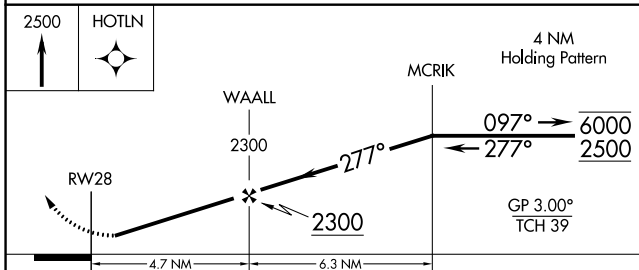
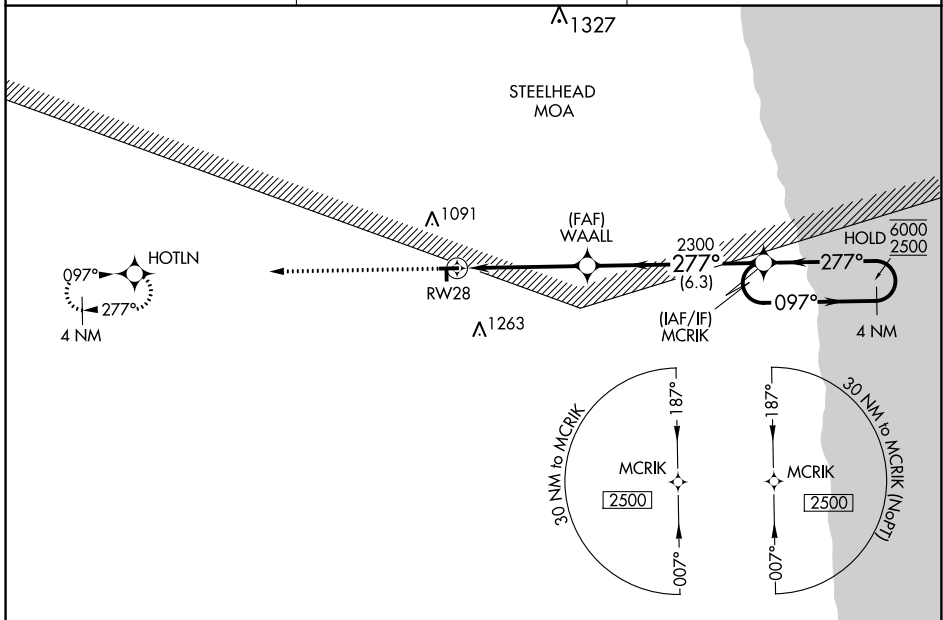
**⚠** Circling NA to Rwy 18 and 36. Circling NA north of Rwy 10-28. Procedure NA at night.  
**⚠** NA Rwy 28 helicopter visibility reduction below 1 SM NA. Baro-VNAV NA. Use Bad Axe altimeter setting.

MISSED APPROACH:  
Climb to 2500 direct  
HOTLN and hold.

BAX AWOS-3  
**118.6**

CLEVELAND CENTER  
**127.7 290.425**

UNICOM  
**122.8 (CTAF) 0**



| CATEGORY     | A                     | B                     | C   | D  |
|--------------|-----------------------|-----------------------|---|----|
| LPV DA       | 1077-1                |                       | 300 (300-1)   | NA |
| LNAV/VNAV DA | 1077-1                |                       | 300 (300-1)   | NA |
| LNAV MDA     | 1260-1                | 483 (500-1)           | 1260-1 <sup>3</sup> / <sub>8</sub><br>483 (500-1 <sup>3</sup> / <sub>8</sub> )  | NA |
| CIRCLING     | 1260-1<br>483 (500-1) | 1340-1<br>563 (600-1) | 1680-2 <sup>3</sup> / <sub>4</sub><br>903 (1000-2 <sup>3</sup> / <sub>4</sub> ) | NA |

REIL Rwy 10  
MIRL Rwy 10-28 0

EC-1, 13 JUN 2024 to 11 JUL 2024

EC-1, 13 JUN 2024 to 11 JUL 2024