

| | | |
|------------------------|-----------------------------|--|
| APP CRS 360° | Rwy Idg TDZE Apt Elev | N/A N/A 489 |
|------------------------|-----------------------------|--|

RNAV (GPS)-A

REIGLE FLD (58N)

NA Procedure NA at night. DME/DME RNP-0.3 NA. Visibility reduction by helicopters NA. Use Harrisburg Intl altimeter setting, when not received, use Fort Indiantown Gap altimeter setting.

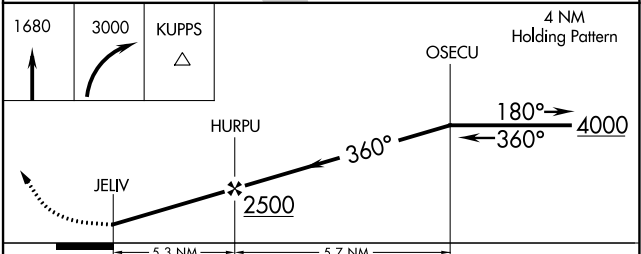
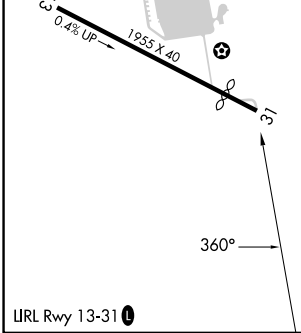
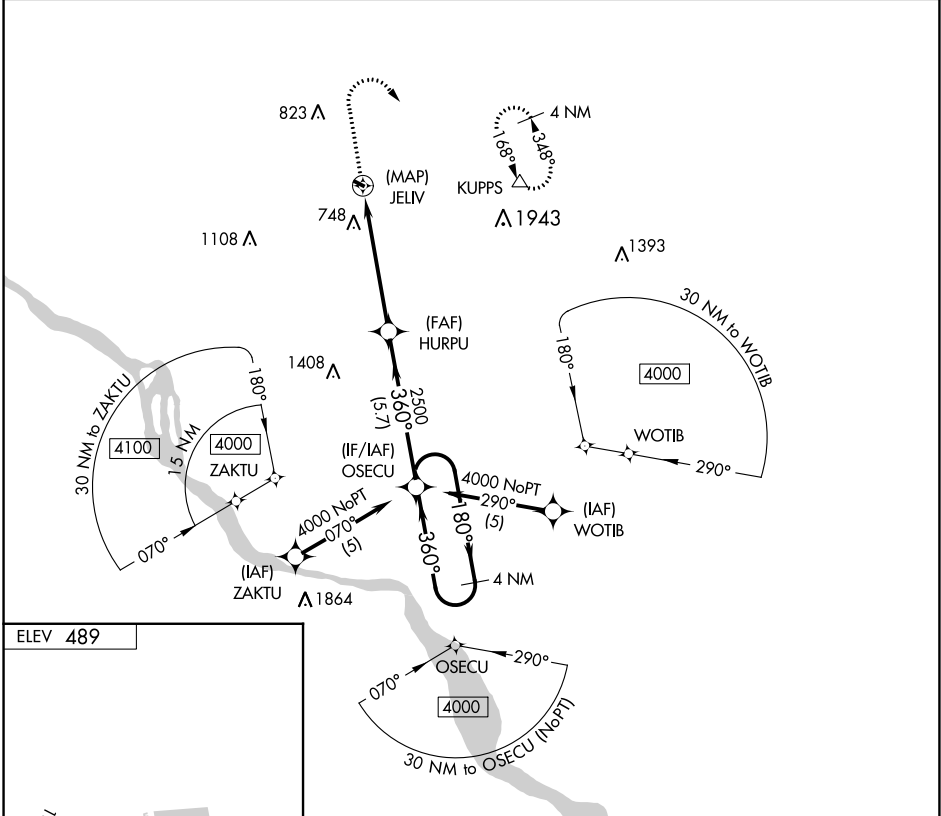
MISSED APPROACH: Climb to 1680 then climbing right turn to 3000 direct KUPPS and hold.

HARRISBURG APP CON

| | | |
|---------------|----------------|-------------|
| 118.25 | 269.45 | (001°-079°) |
| 126.45 | 281.525 | (080°-210°) |
| 124.1 | 273.525 | (211°-360°) |

UNICOM

122.8 (CTAF) **0**



| | | | | |
|----------|-----------------------|-------------------------|----|---|
| CATEGORY | A | B | C | D |
| CIRCLING | 1260-1 771 (800-1) | 1320-1¼ 831 (900-1¼) | NA | |

NE-4, 13 JUN 2024 to 11 JUL 2024

NE-4, 13 JUN 2024 to 11 JUL 2024