

WAAS CH <b>87122</b> <b>W36A</b>	APP CRS <b>358°</b>	Rwy Idg TDZE Apt Elev	<b>4001</b> <b>284</b> <b>285</b>
--	------------------------	-----------------------------	---

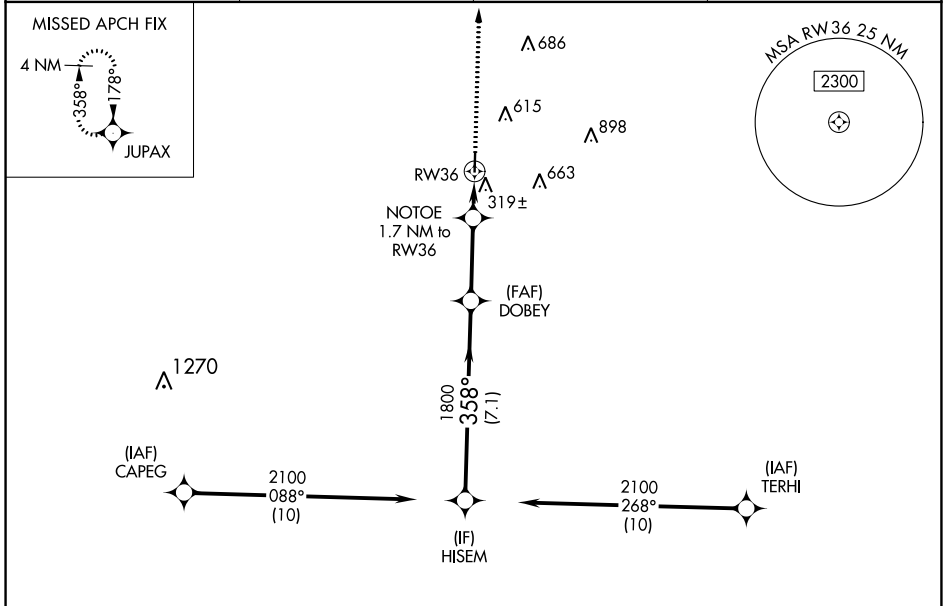
# RNAV (GPS) RWY 36

HEARNE MUNI (LHB)

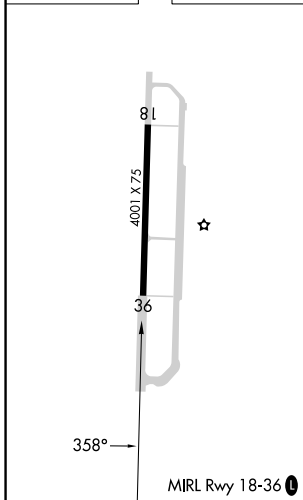
**⚠** For uncompensated Baro-VNAV systems, LNAV/VNAV NA below -15°C (5°F) or above 54°C (130°F). DME/DME RNP-0.3 NA. When local altimeter setting not received, use College Station altimeter setting and increase all DA 55 feet and all MDA 60 feet. Increase LPV, LNAV/VNAV all Cats and LNAV Cat C visibility 1/8 mile. Increase Circling Cat C visibility 1/4 mile. Baro-VNAV and VDP NA when using College Station altimeter setting.

MISSED APPROACH: Climb to 2600 direct JUPAX and hold.

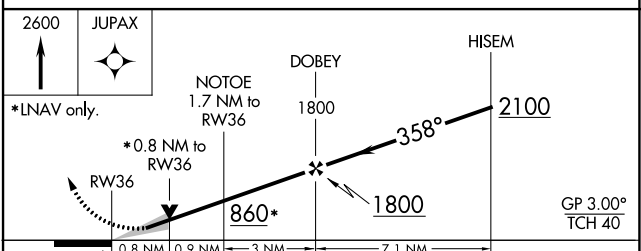
AWOS-3 <b>118.675</b>	HOUSTON APP CON <b>134.3 360.85</b>	CTAF <b>122.9</b>	<b>123.3</b> <b>0</b>
--------------------------	--	----------------------	-----------------------



ELEV <b>285</b>	TDZE <b>284</b>
-----------------	-----------------



## RADAR REQUIRED



CATEGORY	A	B	C	D
LPV DA	484-3/4	200 (200-3/4)		NA
LNAV/VNAV DA	534-7/8	250 (300-7/8)		NA
LNAV MDA	580-1	296 (300-1)	580-7/8 296 (300-7/8)	NA
CIRCLING	800-1 515 (600-1)	920-1 635 (700-1)	1020-2 735 (800-2)	NA